

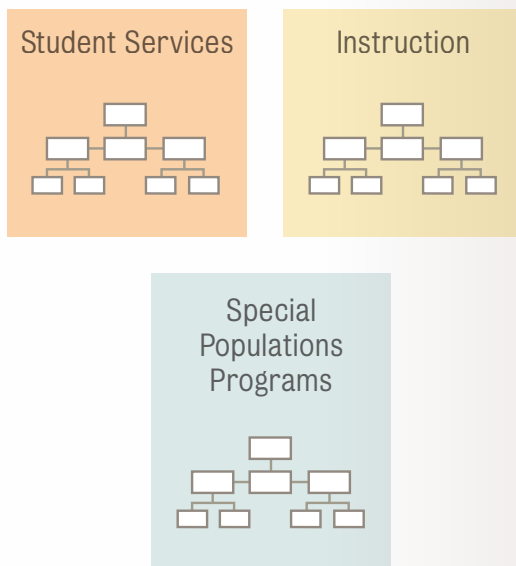
Student Support (Re)defined

Equitable
Integrated
Cost Effective

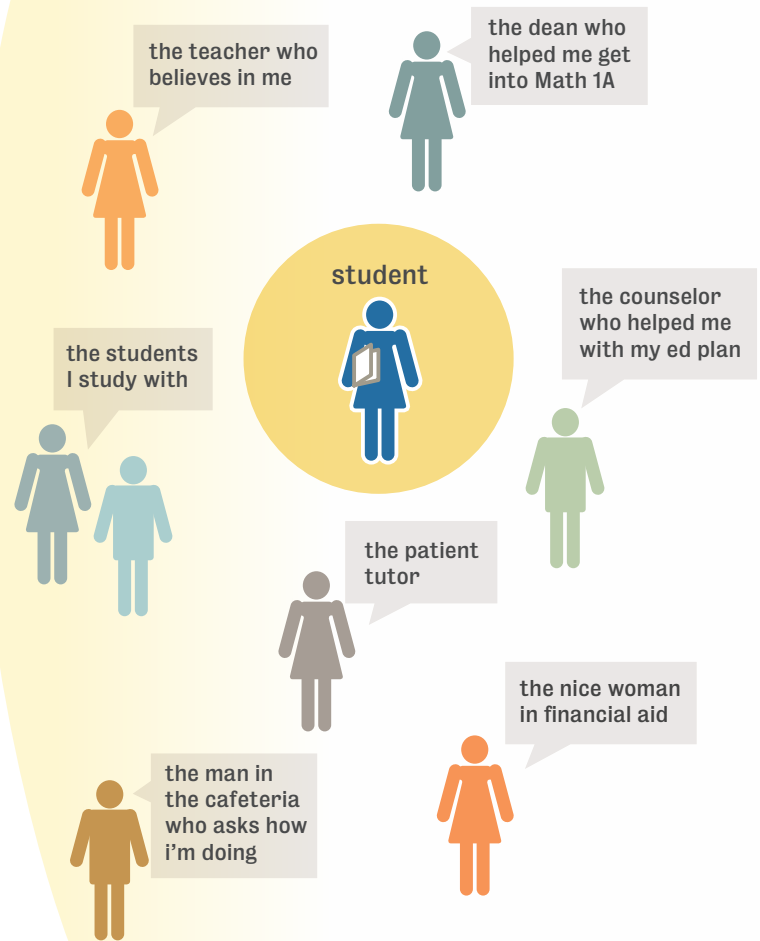
Support from the Student Perspective

How do students perceive support on their campuses? Research performed with over 900 California community college students indicates that they have a very broad definition—different from how practitioners often think of and deliver these services. Where we see divisions, departments, organizational charts and reporting hierarchies, students see people who, regardless of job title or position, can help them reach their goals.

What we see...



What the student experiences...



What can you do on your campus to rethink student support?
For more information, visit www.rpgroup.org/projects/student-support

Conducted by the RP Group | Supported by The Kresge Foundation



the Research & Planning Group
for California Community Colleges