

ACADEMIC CALENDAR

REGISTRATION DATES FOR SUMMER & FALL 2020

April 15.....	STATE MANDATED - EOPS/CARE, DSPS, Foster Youth, CalWORKs, Homeless, and Veterans begins
April 17.....	COLLEGE PRIORITY - Student Athletes and Student Government Officers begins
April 20.....	Continuing students with 3 Core Services completed begins
April 27.....	New students with 3 Core Services completed begins
April 28.....	Returning students with 3 Core Services completed begins
April 29.....	Continuing students who have not completed the 3 Core Services begins
May 4.....	Students on probation, dismissed status, or those who have completed 100 or more degree applicable units at LPC or Chabot College
May 4.....	OPEN REGISTRATION for Summer and Fall
May 5.....	Special Admit/Concurrent high school students for Summer and Fall

For more detailed information on priority groups and registration, see page 3.

Concurrent Enrollment Application Deadline

Summer and Fall 2020.....Concurrent Enrollment Application due by April 17

SUMMER 2020 SESSIONS

June 1 - July 2.....	1 st 5-week session
June 15 - Aug 6.....	8-week session
June 22 - July 30.....	6-week session
July 6 - Aug 6.....	2 nd 5-week session
July 4.....	Holiday – Independence Day Observance (college closed)
July 23.....	Deadline to file for an Associate Degree and/or Certificate of Achievement
August 6.....	Last day of Summer session
August 10.....	Instructors: Summer grades due by 11pm via CLASS-Web
Week of Aug 17, 2020.....	Students: Summer 2020 grades available via CLASS-Web

FALL 2020 SEMESTER CALENDAR (DATES APPLY TO FULL-TERM CLASSES)

August 13.....	Convocation Day
August 14.....	College Day
August 17	Fall semester begins (full-term classes only)
August 17 - September 7	Late enrollment for full-term classes – on a space available basis. Register online through CLASS-Web or in-person with add authorization number
August 17.....	Associate Degree and/or Certificate of Achievement filing period begins through October 23
August 22.....	Instruction begins for Saturday classes
September 4.....	Last day to ADD/DROP with No Grade-of-Record (NGR) - In-Person (full-term classes only)
September 5-6.....	College closed – no Saturday/Sunday classes
September 7.....	Last day to ADD/DROP with No Grade-of-Records (NGR) - Online via CLASS-Web (full-term classes only)
September 7.....	Holiday – Labor Day (college closed)
September 8.....	CENSUS date (full-term classes only)
September 25.....	Last day to request Pass/No Pass (full-term classes only)
October 23	Deadline to apply for an Associate Degree and/or Certificate of Achievement
November 6	Last day to WITHDRAW with a “W” - In-Person (full-term classes only)
November 7	Saturday classes meet
November 8	Last day to WITHDRAW with a “W” - Online via CLASS-Web (full-term classes only)
November 13	Holiday – Veterans Day (college closed)
November 25-28	Holiday – Thanksgiving Recess (college closed) (no Saturday/ Sunday classes)
December 5	Last day of Saturday classes
December 11	Last day of Instruction
December 12	Final Exams for Saturday classes
December 14-18	Final Examination Period
December 21 - January 1, 2021	Holiday – Winter Recess – No Instruction
January 4, 2021	Instructors: Fall grades due by 11pm via CLASS-Web
Week of January 11, 2021	Students: Fall 2020 grades available via CLASS-Web

FALL 2020 DROP FOR NON-PAYMENT DEADLINE

Must Pay by

Students who register for Fall classes between April 15 - May 29.....June 10

Students who register for Fall classes between May 30 - July 9.....July 22

Drop for non-payment will be processed on June 11 and July 23.

SUMMER 2020

1 st 5 - Week	June 1 - July 2
2 nd 5 - Week	July 6 - Aug 6
6 - Week	June 22 - July 30
8 - Week	June 15 - Aug 6

SUMMER ENROLLMENT INFORMATION

~ Please pay close attention to course deadline dates ~

These dates will vary for each Summer course. Complete the following steps to check the deadline dates to add a course, drop with NGR (no-grade-of-record), get a refund, pass/no pass and withdrawal:

How to check a class for Add, Drop NGR, Refund, Pass/No Pass and Withdrawal Deadlines

1. Log into CLASS-Web
2. Select the "**Student Services**" tab
3. Click the "**Registration**" link
4. Click the "**Check Class Deadlines**" link
5. Enter the CRN

COLLEGE SUMMER HOURS

Las Positas College will be closed on Fridays for the months of June and July. Please visit our website at www.laspositascollege.edu for individual department hours of availability.

STUDENT HEALTH AND WELLNESS CENTER

The Student Health and Wellness Center will be open during the Summer. For hours of availability, please visit their website at: www.laspositascollege.edu/healthcenter.

FINAL EXAMS

Final exams for all Summer classes will be held at the last class meeting.

All registration notices, Financial Aid, and general College information will be sent to your ZONEmail Account. Check it regularly.



MISSION STATEMENT

Las Positas College provides an inclusive, learning-centered, equity-focused environment that offers educational opportunities and support for completion of students' transfer, degree, and career-technical goals while promoting life-long learning.

VISION STATEMENT

Las Positas College strives to support and empower students to develop the knowledge, skills, values, and abilities needed to become engaged participants and leaders in their local and global communities.

VALUES STATEMENT

Las Positas College thrives as a collaborative teaching and learning community committed to integrity and excellence by:

1. Encouraging and celebrating lifelong learning
2. Responding to the needs of the ever-changing workplace and society
3. Demonstrating civic, social and environmental responsibility
4. Promoting ethical behavior, mutual trust, equity, and respect within our diverse community
5. Fostering a climate of discovery, creativity, personal development, and physical and mental health
6. Ensuring that Las Positas is a sanctuary campus for undocumented students
7. Holding firm to the belief that each of us makes an astonishing difference.

ACCREDITATION

Las Positas College is accredited by the Accrediting Commission for Community and Junior Colleges of the Western Association of Schools and Colleges.

TABLE OF CONTENTS

Mission, Vision and Values	1	Math Pathways	72-73
COVID-19 Statement	1	Fees and Payment Policy	74-75
Fall 2021 Academic Calendar	2	Financial Aid	76
Registration Dates	3	Academic and Student Support Services	77-79
President's Letter	4	Umoja Flyer	80
Steps to Success	5	Community Education Flyer	81
Admission Information	6-7	College Policies and Procedures	82-84
Course Registration Procedures	8	Campus Safety and Security	85-87
ZoneMail / Stay Connected	9	Parking Permits	88
Enrollment Policies and Procedures ..	10-11	Emergency Alert System	88
Forwarding Your Zonemail	11	Bookstore Information	89
Orientation, Assessment and Educational Plan	12	Transit (Bus) Pass Information	89
Degree, Certificate and Transfer Programs	13-14	Final Exam Schedule	90-91
COVID 19 Safety Plan	15-16	Campus Directory	92
Fall 2021 Course Listings	17-73	Off-Campus Instructional Sites	92
Explanation of terms for In-Person Course Listings	18-19	Campus Map	93
In-Person Course Listings	20-35	College Pathways Event	94
Explanation of terms for Online Course Listings	36-37	Notes	95-96
Online Course Listings	38-71		

Statement Concerning COVID-19 Pandemic

In response to the evolving challenges of the COVID-19 pandemic, the safety of our communities and the success of our students remain our top priorities. At the time of this printing, many of the published policies, established in accordance with board policy and/or college governance, have been temporarily adjusted. During the 2021-2022 academic year, be sure to ask about the latest developments or check the class schedule, available online.

**Please see pages 15-16 for the
LPC COVID 19 SAFETY PLAN**

FALL 2021

Course Listings

Courses with In-Person Component

Full Term 20-31

Courses in this section start on August 18th and end Dec 21st. These courses have a component that meets in-person on the Las Positas campus. Sections may be taught entirely on campus or may be hybrid (some sessions on campus and other instruction online). Refer to the notes listed online with each section.

Late Start..... 32-33

Courses in this section begin after the start of the semester and may be 16-weeks, 14-weeks, or 12-weeks in length. Carefully note the start and end date of the section. These courses have a component that meets in-person on the Las Positas campus. Sections may be taught entirely on campus or may be a hybrid (some sessions on campus and other instruction online).

Fast Track 1..... 34

Courses in this section are 8-weeks long and begin August 18th (Fast Track 1). These courses have a component that meets in-person on the Las Positas campus.

Fast Track 2..... 34-45

Courses in this section are 8-weeks long and begin October 11th (Fast Track 2). These courses have a component that meets in-person on the Las Positas campus.

Courses Online Only

Full Term 38-63

Courses in this section are offered entirely online starting August 18th and ending December 21st. Courses may be offered asynchronously, synchronously, or use a combination of both modes. Refer to the notes or page 17 for guidance on how to determine the modality of the class section.

Late Start..... 64-65

Courses in this section begin after the start of the semester and may be 16-weeks, 14-weeks, or 12-weeks in length. These courses are taught entirely online and may be offered asynchronously, synchronously, or use a combination of both modes. Refer to the notes or page 17 for guidance on how to determine the modality of the class section.

Fast Track 1 66-68

Courses in this section are 8-weeks long and begin August 18th (Fast Track 1). They are taught entirely online and may be offered asynchronously, synchronously, or use a combination of both modes. Refer to the notes or page 17 for guidance on how to determine the modality of the class section.

Fast Track 2..... 68-71

Courses in this section are 8-weeks long and begin October 11th (Fast Track 2). They are taught entirely online and may be offered asynchronously, synchronously, or use a combination of both modes. Refer to the notes or page 17 for guidance on how to determine the modality of the class section.

FALL 2021 Course Listings

EXPLANATION OF TERMS USED IN THE COURSE LISTINGS

SECTION NUMBERS

- A0_ = Asynchronous (fully online - no set meetings)
 S0_ = Synchronous (fully online with specified online meetings)
 B0_ = Combo (combination of synchronous and asynchronous)
 H0_ = Hybrid (on-campus & online)
 09_ = Regular Evening class (starts 4pm or later)
 C0_ = Corequisite Paired Course
 FT_ = Fast Track
 LS_ = Late Start
 NO_ = Noncredit Course
 P0_ = Puente Program
 T0_ = Technical Math: Emporium Mode
 U0_ = Umoja Program
 X0_ = Math Emporium Mode

MEETING DAYS

- M/Mon = Monday
 T/Tue = Tuesday
 W/Wed = Wednesday
 Th/Thu = Thursday
 F/Fri = Friday
 S/Sat = Saturday
 Daily = Monday thru Friday

ROOMS

Refer to campus map on Page 93 for room and building locations

(*) indicates a course is held off-campus

All registration notices, Financial Aid, and general College information will be sent to your ZONEmail Account. Check it regularly.

STAFF NOTATION

As courses are assigned to instructors, the updates will be posted on CLASS-Web and The ZONE.

DATES

Full-Term courses meet from Aug 18 - Dec 21

Late Start courses meet from Sept 20 - Dec 21

Fast Track 1 courses meet from Aug 18 - Oct 8

Fast Track 2 courses meet from Oct 11 - Dec 10

NOTE: Start and end dates for a course affect deadlines such as add, drop, and census. See box below for instructions on how to find these dates for each course.

UNITS

Indicates unit value of each course.

NON-CREDIT classes are noted in GREEN

- Courses are open to all students who meet the academic requirements.
- All course information is subject to change.
- Courses not meeting enrollment requirements may be cancelled.

Important Enrollment Information

Please pay close attention to course deadline dates

These dates may vary for some courses (such as Late Start and Fast Track). Complete the following steps to check the deadline dates to add a course, drop with NGR (no-grade-of-record), get a refund, pass/no pass and withdrawal:

How to Check for Add, Drop NGR, Refund, Pass/No Pass and Withdrawal deadlines

1. Log into CLASS-Web
2. Select the "Student Services" tab
3. Click the "Registration" link
4. Click the "Check Class Deadlines" link
5. Enter the CRN

Courses, dates, and times are subject to change. Please check the college website at www.laspositascollege.edu for the most up-to-date information regarding Fall course offerings.

PLEASE NOTE - CHANGE IN FORMAT

LPC will offer most courses in a virtual format for Fall 2021. Course section numbers for Fall will now be identified using the section key below for asynchronous, synchronous and combination classes:

A01 = Asynchronous (fully online - no set meetings)

S01 = Synchronous (fully online with specified online meetings)

B01 = Combo (combination of synchronous and asynchronous)

H01 = Hybrid (on-campus & online)

Courses with specialized section numbers for certain programs will remain using unique section numbers, (ex: X01, C01, VT1, etc.)

Asynchronous

A class taught 100% only online for the entire duration of the course. The course materials and assignments will be made available by the faculty for students to access on their own time. Class does not meet at regular set time online. Students do not need to come to campus unless they are required to pick up materials.

Synchronous

A class taught 100% online in which the instructor and students are required to meet at a set time online in order to engage, review, and discuss course materials and assignments. All the regular class occurs remotely through ConferZoom in the Canvas platform. Students do not need to come to campus unless they are required to pick up materials.

Full Term Online Course Offerings

Courses in this section are offered entirely online starting August 18th and ending December 21st. Courses may be offered asynchronously, synchronously, or use a combination of both modes. Refer to the notes on Page 17 for guidance on how to determine the modality of the class section.

Late Start Online Offerings

Courses in this section begin after the start of the semester and may be 16-weeks, 14-weeks, or 12-weeks in length. These courses are taught entirely online and may be offered asynchronously, synchronously, or use a combination of both modes. Refer to the notes on Page 17 for guidance on how to determine the modality of the class section.

Fast Track Online Offerings

Courses in this section are 8-weeks long and begin either August 18th (Fast Track 1) or October 11th (Fast Track 2). They are taught entirely online and may be offered asynchronously, synchronously, or use a combination of both modes. Refer to the notes on Page 17 for guidance on how to determine the modality of the class section.

Full Term Course Offerings (with in-person component)

Courses in this section start on August 18th and end Dec 21st. These courses have a component that meets in-person on the Las Positas campus. Sections may be taught entirely on campus or may be hybrid (some sessions on campus and other instruction online). Refer to the notes listed online with each section.

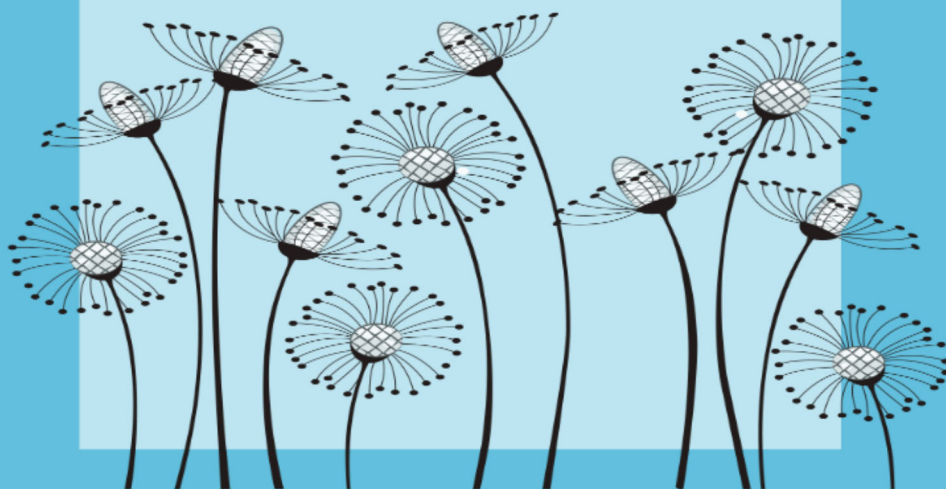
Late Start Offerings (with in-person component)

Courses in this section begin after the start of the semester and may be 16-weeks, 14-weeks, or 12-weeks in length. Carefully note the start and end date of the section. These courses have a component that meets in-person on the Las Positas campus. Sections may be taught entirely on campus or may be a hybrid (some sessions on campus and other instruction online).

Fast Track Offerings (with in-person component)

Courses in this section are 8-weeks long and begin either August 18th (Fast Track 1) or October 11th (Fast Track 2). These courses have a component that meets in-person on the Las Positas campus. Sections may be taught entirely on campus or may be a hybrid (some sessions on campus and other instruction online).

Spring
2021
Course
Listings



SPRING 2021 COURSE SCHEDULE

Explanation of Terms used in the Online Course Schedule

To protect the health and safety of our community during the pandemic, LPC will offer most courses in a virtual format for Spring 2021. Visit www.laspositascollege.edu/spring2021 for resources to support online learning and services, including a current Class Schedule. Use the resource below to guide your choice about the types of online classes available.

Section number identifiers:

A01 = Asynchronous

S01 = Synchronous

B01 = Both; Combination of synchronous and asynchronous

H01 = Hybrid

Terms to know:

Asynchronous

A class taught 100% only online for the entire duration of the course. The course materials and assignments will be made available by the faculty for students to access on their own time. Class does not meet at regular set time online. Students do not need to come to campus unless they are required to pick up materials.

This is what it looks like in the schedule:

Humanities								
CRN	Subj	Crse	Sec	Units	Title		Campus	
		Start Date		End Date	Days	Times	Bldg	Room
31311	ARHS	1	A01	3.00	Intro to Art History		Las Positas College	
		Jan 19, 2021		May 28, 2021				ONLINE
		Instructor(s): RENTERIA, SORAYA						
This section is an online course. For more information, see the section titled "Online Learning" in this schedule, or go to http://www.laspositascollege.edu/onlinelearning								

Synchronous

A class taught 100% online in which the instructor and students are required to meet at a set time online in order to engage, review, and discuss course materials and assignments. All the regular class occurs remotely through ConferZoom in the Canvas platform. Students do not need to come to campus unless they are required to pick up materials.

This is what it looks like in the schedule:

Humanities								
CRN	Subj	Crse	Sec	Units	Title		Campus	
		Start Date		End Date	Days	Times	Bldg	Room
30672	ANTR	2	S01	3.00	Introduction to Archaeology		Las Positas College	
		Jan 19, 2021		May 28, 2021	MW	12:30 PM-1:45 PM		ONLINE
		Instructor(s): Staff - LPC, GENERAL						
Class will meet live (synchronously) online via ConferZoom each week at the time listed.								

SPRING 2021 COURSE SCHEDULE

Both (*combo of asynchronous and synchronous*)

A class that is taught 100% online with a combination of asynchronous and synchronous instruction, which means that portions of the course will be delivered live at scheduled times through ConferZoom while other instruction will be available in Canvas during the term. Students do not need to come to campus unless they are required to pick up materials.

This is what it looks like in the schedule:

Humanities								
CRN	Subj	Crse	Sec	Units	Title		Campus	
		Start Date		End Date	Days	Times	Bldg	Room
33059	HUMN	12	B01	3.00	Introduction to Film Studies		Las Positas College	
		Jan 19, 2021		May 28, 2021	T	7:00 PM-8:15 PM		ONLINE
Instructor(s): ELIZABETH WING BROOKS								
Class will meet live (synchronously) online via ConferZoom at the time listed. Other content will be delivered online through Canvas (asynchronously).								

Hybrid *Asynchronous or Synchronous (Online) with Face-to-Face Components*

Class content will be delivered online through Canvas (asynchronously or synchronously) except for specified days of the week that will meet on campus as listed in the schedule.

This is what it looks like in the schedule:

Humanities								
CRN	Subj	Crse	Sec	Units	Title		Campus	
		Start Date		End Date	Days	Times	Bldg	Room
31241	BIO	1C	H01	5.00	Cell and Molecular Biology		Las Positas College	
		Jan 19, 2021		May 28, 2021	TTh	9:00 AM-10:15 AM	L800	ONLINE
		Jan 19, 2021		May 28, 2021	W	8:00 AM-10:50 AM	L1850	1854
Instructor(s): Staff - LPC, GENERAL								
This is a hybrid course. Class content will be delivered online through Canvas (asynchronously), except for Wed 8:00am-10:50am in Room 1854.								

**On campus courses will reflect as meeting on campus with a designated room number.*

Scan here to visit the
current Spring 2021
class schedule online.



SPRING 2021 COURSE LISTINGS

PREREQUISITE

means a condition of enrollment that a student is required to meet in order to demonstrate current readiness for enrollment in a course or educational program.

STRONGLY RECOMMENDED

means a condition of enrollment which a student is advised, but not required, to meet before, or in conjunction with enrollment in a course or educational program.

COREQUISITE

means a condition of enrollment consisting of a course which a student is required to take simultaneously with another course.

SECTION NUMBERS

PLEASE NOTE - CHANGE IN FORMAT:

LPC will offer most courses in a virtual format for Spring 2021. Course section numbers for spring will now be identified using the section key below for asynchronous, synchronous and combination classes:

A01=Asynchronous

S01=Synchronous

B01=Both; Combination of synchronous and asynchronous

H01=Hybrid

Courses with specialized section numbers for certain programs will remain using unique section numbers, (ex: X01, C01, V01, etc.)

MEETING DAYS

M / Mon = Monday

T / Tue = Tuesday

W / Wed = Wednesday

Th / Thu = Thursday

F / Fri = Friday

S / Sat = Saturday

Daily = Monday thru Friday

ROOMS

Refer to campus map on p. 85 for room and building locations

(*) indicates a course is held off-campus

STAFF NOTATION

As courses are assigned to instructors, the updates will be posted on CLASS-Web and The ZONE.

DATES

Full-term courses meet from Jan 19 - May 28

Late Start courses meet from Jan 25 - May 21

Fast Track courses meet from Jan 19 - Mar 12 or Mar 15 - May 21

NOTE: Start and end dates for a course affect deadlines such as add, drop, and census. See box below for instructions on how to find these dates for each course.

GRADE OPTIONS

GR=Course must be taken for letter grade (not pass/no pass).

OP=Course may be taken for letter grade OR pass/no pass.

P/NP=Course must be taken for pass/no pass (not letter grade).

UNITS

Indicates unit value of each course.

NON-CREDIT classes are noted in green

Courses are open to all students who meet the academic requirements.

All course information is subject to change.

Courses not meeting enrollment requirements may be cancelled.

Important Enrollment Information

~ Please pay close attention to course deadline dates ~

These dates may vary for some courses (such as Late Start and Fast Track). Complete the following steps to check the deadline dates to add a course, drop with NGR (no-grade-of-record), get a refund, pass/no pass and withdrawal:

How to Check for Add, Drop NGR, Refund, Pass/No Pass and Withdrawal deadlines

1. Log into CLASS-Web
2. Select the "Student Services" tab
3. Click the "Registration" link
4. Click the "Check Class Deadlines" link
5. Enter the CRN

All registration notices, Financial Aid, and general College information will be sent to your ZONEmail Account. Check it regularly.

Courses, dates, and times are subject to change. Please check the college website at www.laspositascollege.edu for the most up-to-date information regarding Spring course offerings.