
 California Community Colleges
Chief Student Services
Administrators Association

The Nuts and Bolts of the Student Success Act Implementation

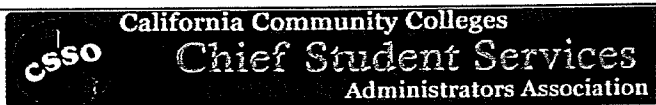
Dr. Erika Endrijonas
Executive Vice President, Oxnard College
President, Chief Student Services Officers' Organization

 California Community Colleges
Chief Student Services
Administrators Association

Student Success Act of 2012 (SB 1456)

- **First steps to begin implementation of 2011 Student Success Task Force recommendations:**
 - 2.2 – *Require Orientation, Assessment and Ed Plans*
 - 2.5 – *Require students to declare a course of study*
 - 3.2 – *Incentivize success with BOGFW conditions (and enrollment priorities)*
 - 8.2 – *Invest in a Student Support Initiative*

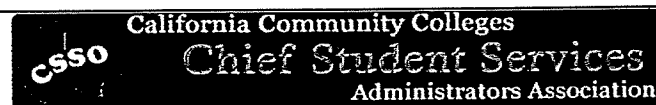
- all funds to assist w/ the disproportionate SVCS among groups



Student Success Act of 2012 (SB 1456)

○ Links funding to support:

- 7.3 Student Success Scorecard: Implement the accountability scorecard
- 2.1 Centralized Assessment: As a condition of receipt of funds, requires colleges to adopt common assessment if the college uses standardized assessment tests (when CCCAssess becomes available)

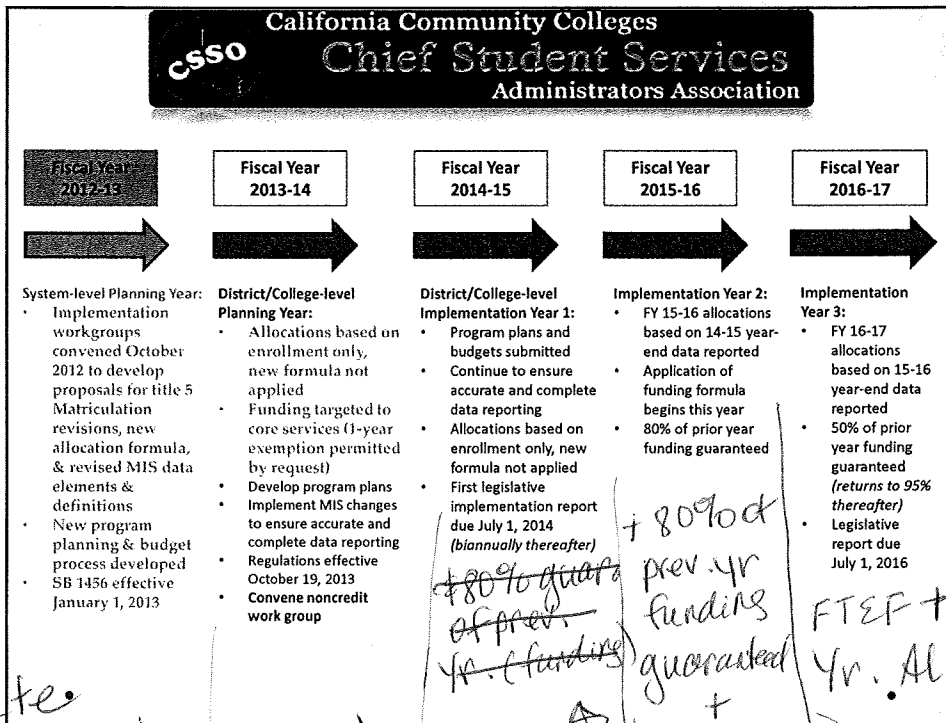
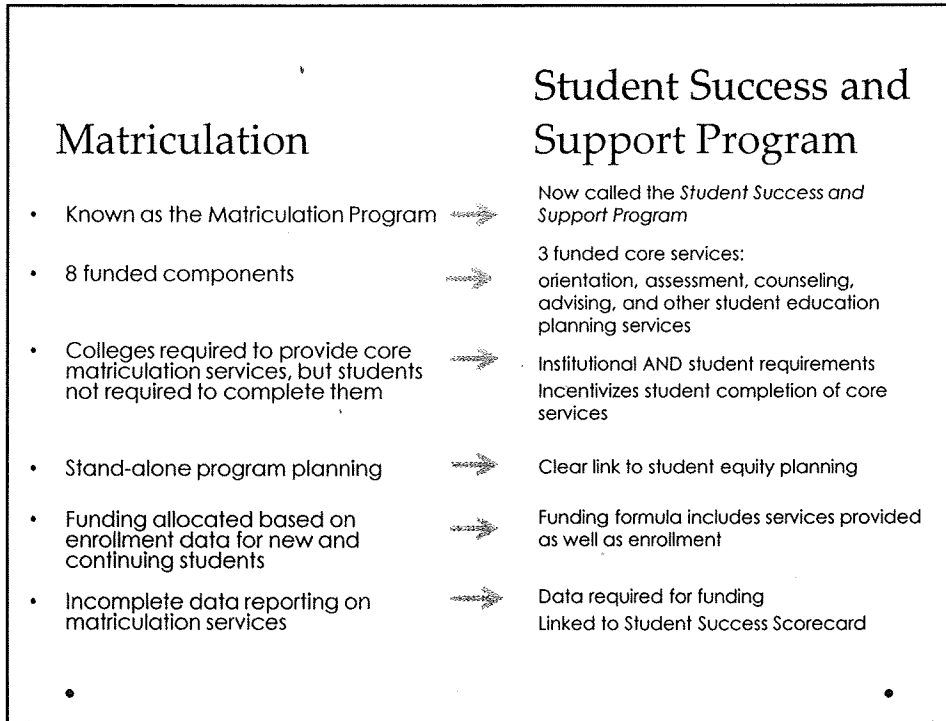


Student Success and Support Program Scope and Intent

...Student Success is the responsibility of the institution and student, supported by well-coordinated and evidence based student and instructional services to foster academic success.

Title 5, Section 55500

Before 2012 students not required to Assess, Orient, Co-counsel -- now must -- Incentivized by Priority List Placement.



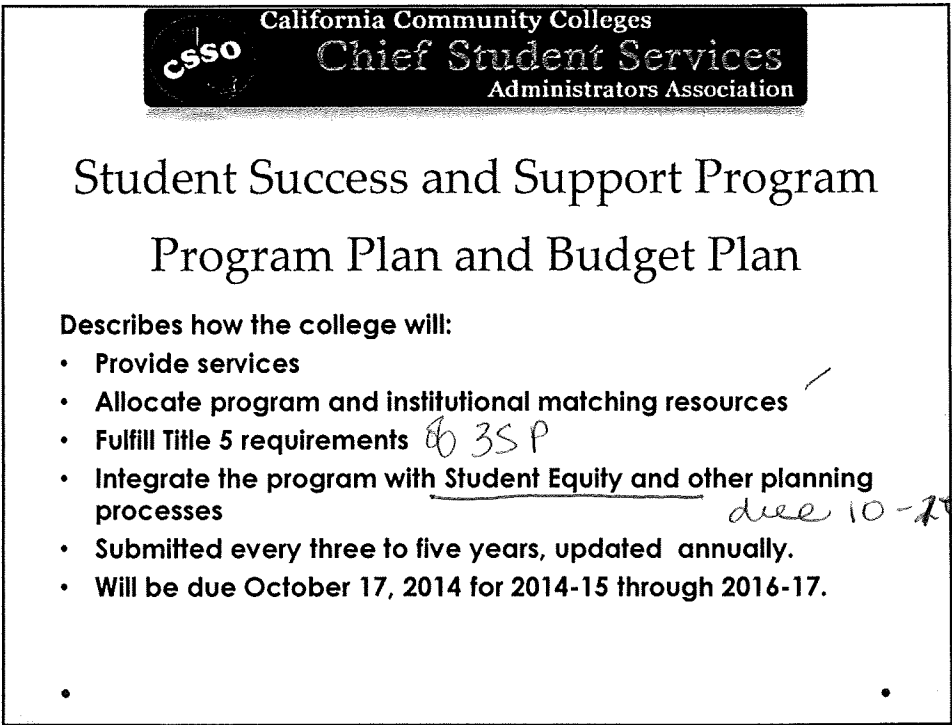
state
 Planning Yr. Tif V, ed plans
 colleges' Planning Year
 Funding based on FTES
 7-1-14 Funding Model based on Svcs actually provide: FTES
 + 80% of prev. yr. funding guaranteed + FTES
 Funding: FTEF + 50% of Prev. Yr. Allocation
 + FTES



Student Success and Support Program Program Plan and Budget Plan

Describes how the college will:

- Provide services
- Allocate program and institutional matching resources
- Fulfill Title 5 requirements *to SSP*
- Integrate the program with Student Equity and other planning processes *due 10-27-14*
- Submitted every three to five years, updated annually. *now due 11-21-14*
- Will be due October 17, 2014 for 2014-15 through 2016-17.

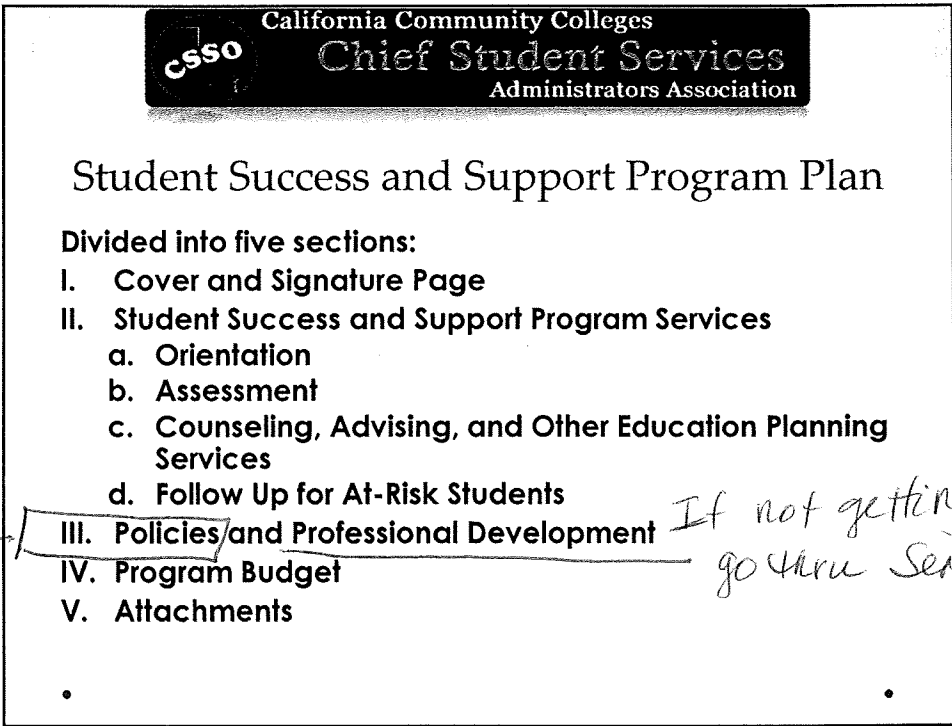


Student Success and Support Program Plan

Divided into five sections:

- I. Cover and Signature Page
- II. Student Success and Support Program Services
 - a. Orientation
 - b. Assessment
 - c. Counseling, Advising, and Other Education Planning Services
 - d. Follow Up for At-Risk Students
- III. Policies and Professional Development *If not getting training go thru Senate to require.*
- IV. Program Budget
- V. Attachments

Bol Pol & Administr. Proced.





Student Success and Support Program Core Services

- Orientation
- Assessment for Placement
- Counseling, Advising and Other Education Planning Services
- Abbreviated Education Plan (1-2 Semesters)
- Comprehensive Education Plan
- Follow-Up Services for At-Risk Students defined as students enrolled in Basic Skills Courses, students who have not declared a major or course of study, and students who are on academic probation or in danger of losing their BOG Fee Waiver

Keep Students!



Student Success and Support Program Reporting Requirements

- Student Success and Support Program Plan
- Mid-Year Report (Declaration of Unused Funds)
- Year-End Expenditure Report
- Management Information System (MIS) data reporting

This Yr Gov Brown gave extra \$ - but only 9 mos. to spend



can carry over til Dec 16

This is the only Yr can carry over, Chanc. Harris. If we don't spend it, tells legislature we don't need it & they will reduce funding.

California Community Colleges
Chief Student Services
 Administrators Association

MIS Data Collection

Greatly Increased

Eff. Tues. 7-1-14

Reporting Matriculation services was always required but there were no benefits or consequences for colleges to incentivize accurate or complete data.

- SB 1456 requires services provided to students be a factor in allocating Student Success and Support Program funds.
- The data elements were revised in July 2013 by the MIS Data and Funding Formula Work Group.
- New Data File (SS)
- Optional for 2013-14, Mandatory for 2014-15.

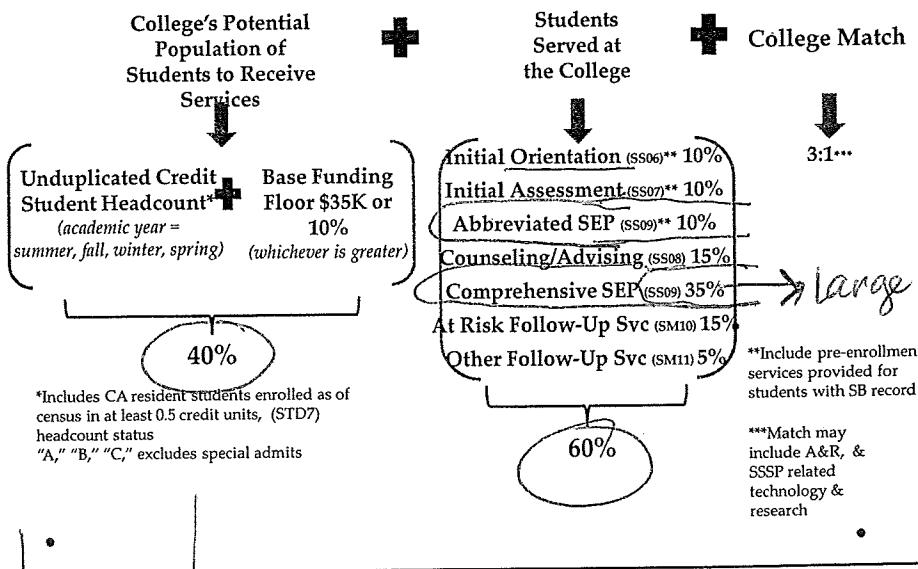
• Banner can't track all of this

• Degree Works - now does communicate w/ Banner
 • SAPS - can't track into Banner (_____ does)

California Community Colleges
Chief Student Services
 Administrators Association

SB 1456 SSSP Credit Funding Formula

Purpose of this is to report everything - Gives the state data (for Gov, legislators, people) - Bee. Amt of MIS-Information out there is alot



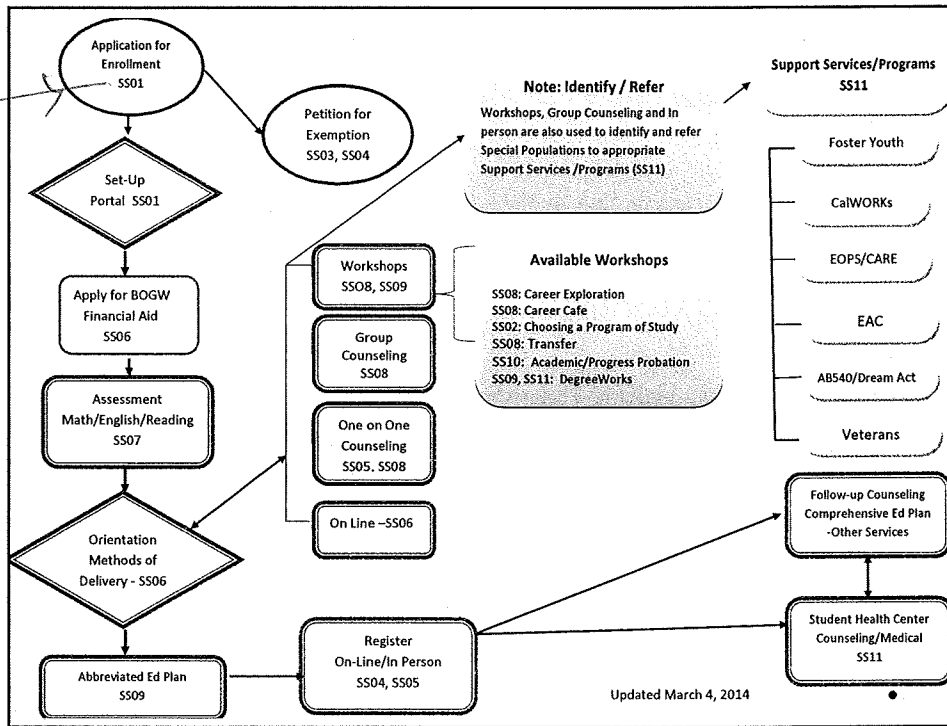
large % = incentive (Degree Works)

2. Record Any Orientation - Lib, special tab, fore sec, Counseling - not ev. cours, visit limited to 2-3 (she thinks)

How Dr. Endrignas' District does it.

6/20/2014

their MS codes that map to each procedure.



California Community Colleges
CSO Chief Student Services Administrators Association

Student Support Services Funding

- 2013-2014: ~~\$100~~³⁶ Million with 3:1 Match - ev. \$/we'd from state we had to match \$3 - only reinstated to 2009 funding
- 2014-2015: Additional \$100 Million with 2:1 Match
 2:1 may not wk, bec. of 50% law, downturn, = still worry @ able to meet the match (prohibits covens. hiring)
- Can we meet the match? many may not
- What happens if we can't? Released a survey to colleges SSO's to see if colleges will be able to meet the match -> Chané. Ofc has used match #5 data, from 2009!
- 2014-2015: \$70 Million for Student Equity
 Dis-aggregate data - + see where svc issues & work on that.
- Dr. Endrignas hopes Chané will add a waiver

Chief Bus. Officers + Chief St Svc officers told Chané, could not make it on 3:1 Match.

\$30M went to DSPS

Legislature + Chané + colleges DO NOT want to see State & left on Table end of yr.

? Common Assmt? Same test - Yes → all colleges will use same whatever the state w/ group decides. Looking at creating own or purchasing one.

6/20/2014

But - still can use multiple measures (EAP, own college, etc.)



Theory - portability of scores - but all have been locally validated.

- Doing more w/ less = Huge Burnout for Classified

? NO formula for state to discover

QUESTIONS?

State expected that coll's would have classified
Need way to quantify

IRS - what is validation of new testing & local testing.

ASK R.P. Group if condoa rec'd study for classified

→ if base funding on 'neighborhood' of college = wrong sends wrong msg - that st's from other areas - +

? 50% Law & FON - problems to make the match - is legal, thinking of easing up for awhile? Diff. discussion - Prob. won't happen

? Common Core Assmt - will 11th grade testing count as an assessment under 3SP? Yes, But - do multiple

Yes, can use 11th grade (cheaper) ^{common} core - OR can use Common Assmt. for multiple measures