



ISP Newsletter

Volume 2, Issue 1

February, 2008

Inside This Issue:

| | |
|--|---|
| Welcome | 1 |
| Valentine's Day | 1 |
| Add/ Drop Dead- line | 1 |
| Full Time Enroll- ment Require- ment | 2 |
| Health Insurance Coverage | 2 |
| Campus Closed | 2 |
| Student ID Cards | 3 |
| Lunar New Year | 3 |
| Club Day | 3 |
| Scholarships Available | 4 |
| January and Feb- ruary Birthdays | 4 |
| Contact Us | 5 |

Welcome to the Spring Semester at LPC!

Dear Students,

We hope you are enjoying your classes and having a wonderful semester so far. The International Student Program (ISP) welcomed 29 new students this semester from the following countries: Brazil, Cambodia, Canada, China, the Czech Republic, Germany, Ghana, Indonesia, Italy, Korea, Malawi, Mexico, Nigeria, the Philippines, Romania, Saudi Arabia, Slovakia,, Thailand, and Vietnam, We are honored that you've chosen to study at Las Positas College. The ISP is excited to help you reach your academic goals and have an enjoyable experience while studying here.



We hope that you find this newsletter informative and helpful. The ISP always welcomes your feedback, questions, and story ideas.

Valentine's Day—Thursday, February 14

Valentine's Day is a special day to treat your special someone in your life with roses or chocolates. Many children exchange cards to classmates, and couples go out for a romantic dinner. Many people wear red on this day. This day originated from a Roman named Valentine. It was at the time, forbidden for men in the Roman army to marry, but the Christian Valentine presided over many weddings anyway. He was sent to jail because of this and was martyred for refusing to give up Christianity. He died on February 14, 269 A.D., the same day that had been devoted to love lotteries. Legend also says that St. Valentine left a farewell note for the jailer's daughter, who had become his friend, and signed it "from your Valentine". Happy Valentine's Day!



Add/ Drop Deadline

The last day to Add or Drop with a NGR (No Grade of Record) **in person** is **Friday, February 8.**

The last day to Add or Drop with NGR (No Grade of Record) **online** is **Sunday, February 10.**

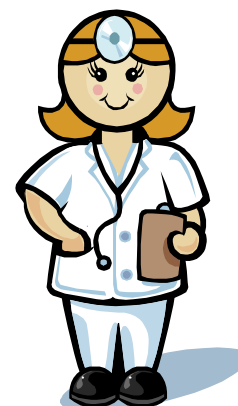


Full Time Enrollment Requirement

Just a reminder that all students with F-1 (student) non immigrant visa status are required to be enrolled in and complete a minimum of 12 units every Fall and Spring Semester. You may not withdraw or drop below 12 units without prior permission from the ISP Office. If you have any questions or difficulties, please come into the ISP Office.

Health Insurance Coverage

The health and safety of all international students at LPC is our primary concern. To protect you from unforeseen injuries and illnesses and from the high cost of medical care in the U.S., medical insurance is required for all international students. This coverage must include repatriation and medical evacuation and must be continuous throughout the semester. If you have not done so already, please submit proof of insurance coverage to the ISP Office as soon as possible. If you have not yet purchased health insurance, and need assistance, we would be happy to recommend several plans to you that provide good coverage and at a reasonable cost. As it is a requirement of your enrollment at LPC, failure to take care of this matter right away may jeopardize your status with Las Positas College. If you have any questions regarding your health insurance or this requirement, please contact the ISP Office.



Campus Closed

Thursday, February 14 is Flex Day for LPC faculty and staff to attend workshops for professional development. The Campus is closed for daytime courses starting before 4:00 PM only. Classes scheduled for 4:00 PM or later will be taught as regularly scheduled.



Holidays

The Campus is closed and there are no classes on Friday, February 15 (Lincoln's Birthday) and Monday, February 18 (Washington's Birthday)

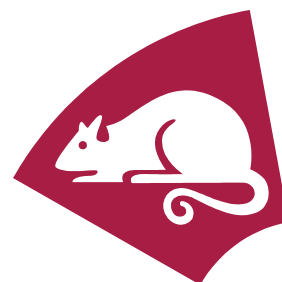
Student ID Cards



The Student ID Photo camera is now working. If you have not received a Student ID Card, please either stop by the ISP Office or you can go directly to the Admissions and Records Office, in Building #700 to request an ID Card.

Lunar New Year—Thursday, February 7

The Lunar New Year begins on the first new moon of the new year. For many Asian families around the world, the Lunar New Year is a celebration of change. According to the Asian Zodiac, 2008 is the year of the Rat.



Chinese New Year Parade

Saturday, February 23

5:30 pm (rain or shine)

Free

A San Francisco tradition since just after the Gold Rush, the Chinese New Year Parade in San Francisco's Chinatown is the largest celebration of its kind outside of Asia. Highlights of the parade include elaborately decorated floats, school marching bands, stilt walkers, lion dancers, Chinese acrobatics, the newly crowned Miss Chinatown U.S.,A. and the Golden Dragon "Gum Lung". The Golden Dragon is over 201 feet long, made with layers of silk, gauze and velvet which cover a bamboo frame. It is always featured at the end of the parade

as the grand finale and will be accompanied by over 600,000 firecrackers. The parade starts at Second and Market streets and ends at Kearny and Jackson streets. If you can't make it to San Francisco, you can watch it on KTVU Fox 2 or KTSF, Channel 26 from 6:00 pm to 8:00 pm



Club Day—Wednesday, February 13

11:00 am — 2:00 pm in front of the Library (Building #2000)

All the student clubs will have booths available and try to recruit new club members. Joining a club is a great way to be active on campus and meet new people.

World Cultures Alliance

The World Cultures Alliance (WCA) is a club that represents and promotes the diversity on our campus. Please stop by our booth at Club Day to find more about the club and our fun and educational activities planned for this semester. The WCA Club meets every other Tuesday. Our next meeting is on Tuesday, February 19 at 2:00 in the Club Room (in the back of the cafeteria in Building #1700)

Scholarships Available

The Annual LPC Scholarship Program is now being advertised. Unlike Financial Aid programs, International students ARE eligible for many of the scholarships.



Students need to have completed at least 12 units at LPC to qualify. Many scholarships do NOT require a very high Grade Point Average (GPA) some require good progress, over a 2.0! and many do NOT require financial need.

The most important selling point for a student's application is the personal statement that is submitted as part of the application.

With the application and personal statement, you will need a recommendation form from an instructor that knows you well. Applications can be downloaded from the Financial Aid Webpage (which is accessed through the LPC Home Page); the direct link is <http://www.laspositascollege.edu/financialaid/2008lpcscholarships.php>. The deadline to apply is March 17. Good Luck!

January and February Birthdays

Changhee Kim—January 1
 Vu Nguyen Nguyen—January 1
 Yuri Lee—January 1
 Wing Chung (Jo Jo) Leung—January 2
 Koh Huh—January 5
 Ahmad Jamal—January 5
 Seokju Kim—January 5
 Jung Mi Lee—January 7
 Saori Taira—January 7
 Marc Sarcia—January 9
 Crisanto Jr. Mejia Mora—January 10
 Sandra Vacikova—January 14
 Abdulmohsen Al Sidran—January 23
 Katarina Kunderlikova—January 23
 Hyun Park—January 23

Lim Bo—February 3
 Antoine Beaudet—February 17
 Madalitso Mitambo—February 19
 Alina Dittmann—February 22
 Yong-Sung Kim—February 25
 Kang Fang Wang—February 26
 Sungkyun Kim—February 27
 Jinman Chang—February 28

Chuc Mung Sinh Nhat (Vietnamese for Happy Birthday)





3033 Collier Canyon Road
Livermore, CA 94551

International Student Program
Building # 1500
Room # 1502
Office Hours: M-Th 9:00—4:00
F 9:00—1:00



Contact Us

Cindy Balero

International Student Program Coordinator

Telephone: (925) 424-1548

E-mail: cbalero@laspositascollege.edu

Sean Day

International Admissions Specialist

Telephone: (925) 424-1540

E-mail: sday@laspositascollege.edu

