

Campus Map (</assets/docs/LPC-Campus-Map.pdf>)

Find People (<http://laspositascollege.edu/directory/index.php>)

Faculty & Staff (<http://www.laspositascollege.edu/facultystaff/index.php>)

Student Resource Guide (</resourceguide/index.php>) CLASS-Web (<https://bw11.clpccd.cc.ca.us/>)

Canvas (<http://clpccd.instructure.com/>)

Online Learning (<http://www.laspositascollege.edu/onlinelearning/>)

Library (<http://laspositascollege.edu/library/index.php>) Quick Links ▾



LAS POSITAS
COLLEGE



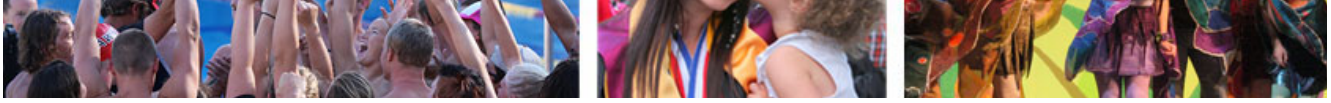
Free COVID-19 testing (<https://www.cityhealthuc.com/cityhealth-urgent-care-opens-new-covid-19-testing-locations-in-dublin-livermore>) is now available to Chabot-Las Positas Community College District students, employees, and the community. Appointments are required for COVID-19 testing and can be made at norcalcovid19testing.com (<https://norcalcovid19testing.com/>).

COVID-19 Response: Las Positas College has transitioned to [Online Classes and Services \(/onlinecollege/index.php\)](/onlinecollege/index.php). Details and Resources Here (<http://laspositascollege.edu/spring2021/>).

The Zone Student Portal is unavailable. However, you can still access [Class-Web \(http://banner-web.clpccd.cc.ca.us:700/\)](http://banner-web.clpccd.cc.ca.us:700/) and [Zonemail \(http://stumail.clpccd.edu/\)](http://stumail.clpccd.edu/).

Puente





Las Positas College (/) > Puente



Puente

What is the Puente Project?

The Puente project is a learning community with the goal of increasing the transfer-going rate of educationally disadvantaged students.

The Puente model is composed of three integrated joint components:

- Counseling
- English
- Mentoring

The program at Las Positas College provides a dedicated counselor to students participating in the program, utilizes Latino, Filipino, Afghani (Muslim), American Indian, European, and/or African American literature to strengthen critical thinking skills. Students are assigned community professional as mentors providing an additional layer of support.

Supplementary activities such as family nights, mentor mixer, college tours, and four-year college representative visits, round out a program designed to prepare students for transfer to a four-year institution and degree attainment.

Puente is open to students of all backgrounds.

Puente Introduction Video

Puente Project - a presentation



Apply to Puente (https://docs.google.com/forms/d/e/1FAIpQLScx3G46W0L5g0Nbw_CXCMLuzRL)

For more information please contact:

Rafael Valle

☎ (925) 424-1414 (tel:925-424-1414)

✉ rvalle@laspositascollege.edu (mailto:rvalle@laspositascollege.edu)

Michelle Gonzales

☎ (925) 424-1218 (tel:925-424-1218)

✉ mgonzales@laspositascollege.edu (mailto:mgonzales@laspositascollege.edu)

Kali Rippel

☎ (925) 424-1155 (tel:925-424-1155)

✉ kRippel@laspositascollege.edu (mailto:kRippel@laspositascollege.edu)

3000 Campus Hill Drive

Livermore, CA 94551

(925) 424-1000

Apply for Admission (<https://www.openccapply.net/ccapply-welcome?cccMisCode=481>)

Bookstore (<http://www.bkstr.com/laspositasstore/home>)

Canvas (<https://clpccd.instructure.com/login/canvas>)

Contact (</feedback.php>)

Jobs (<https://clpccd.peopleadmin.com/>)

Parking (</parking/index.php>)

Safety & Security (</safety/index.php>)

Campus Crime Statistics (</safety/documents/clery.pdf>)

Academic Senate (</gv/academicsenate/agenda.php>)

Curriculum Committee (</gv/curriculum/minutes.php>)

Incident Referral Forms (</maxient/index.php>)

Faculty & Staff Email (<https://mail.clpccd.org/>)

Student Email (<https://mail.google.com/a/zonemail.clpccd.edu>)

The Zone (<https://myportal.clpccd.cc.ca.us/cp/home/displaylogin>) | CLASS-Web (<https://bw11.clpccd.cc.ca.us/>)

Student Government (</lpcsg/index.php>)

Document Viewers (</disclaimers/viewers.php>)
Accreditation (<http://laspositascollege.edu/accreditation/index.php>)

Title IX (</title-ix/index.php>)

Accessibility (</disclaimers/accessibility.php>)

Disclaimers (</disclaimers/index.php>)

Governing Board Agenda (<http://www.clpccd.org/board/BoardMeetingAgenda.php>)

HEERF CARES Act Reporting (</caresact2020/index.php>)



(<https://www.facebook.com/Las-Positas-College-271570229564419/>)



(<https://twitter.com/LPCOfficial>)



(<https://www.youtube.com/channel/UCg8faFMq-WM-HoiZTfd4OjA>)



(<https://www.instagram.com/laspositascollege/>)

(<http://www.clpccd.org/>)

7600 Dublin Boulevard, 3rd Floor
Dublin, CA 94568
(925) 485-5208

(<http://www.chabotcollege.edu/>)

25555 Hesperian Boulevard
Hayward, CA 94545
(510) 723-6600

© (<https://a.cms.omniupdate.com/11/?skin=clpccd&account=laspositascollege&site=www&action=de&path=/puente/index.pcf>) Copyright 2021 Las Positas College