

Why use Inspiration?

Inspiration is a software program designed to help students comprehend information and concepts. Instructors can use this visual learning tool for activities such as concept mapping, critical thinking, brainstorming, diagramming, outlining, and organizing.

Whether you want to create handouts for your students, overhead transparencies, or web pages, let Inspiration help organize your thoughts.

Tools used in Inspiration

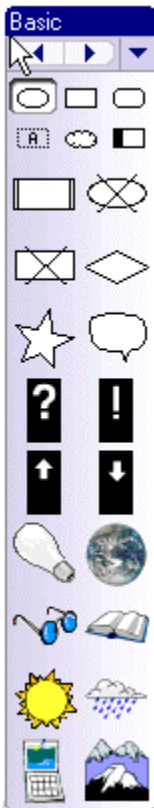
1. The Diagram toolbar is displayed at the top when you launch the program.



2. The Formatting toolbar is displayed at the bottom.

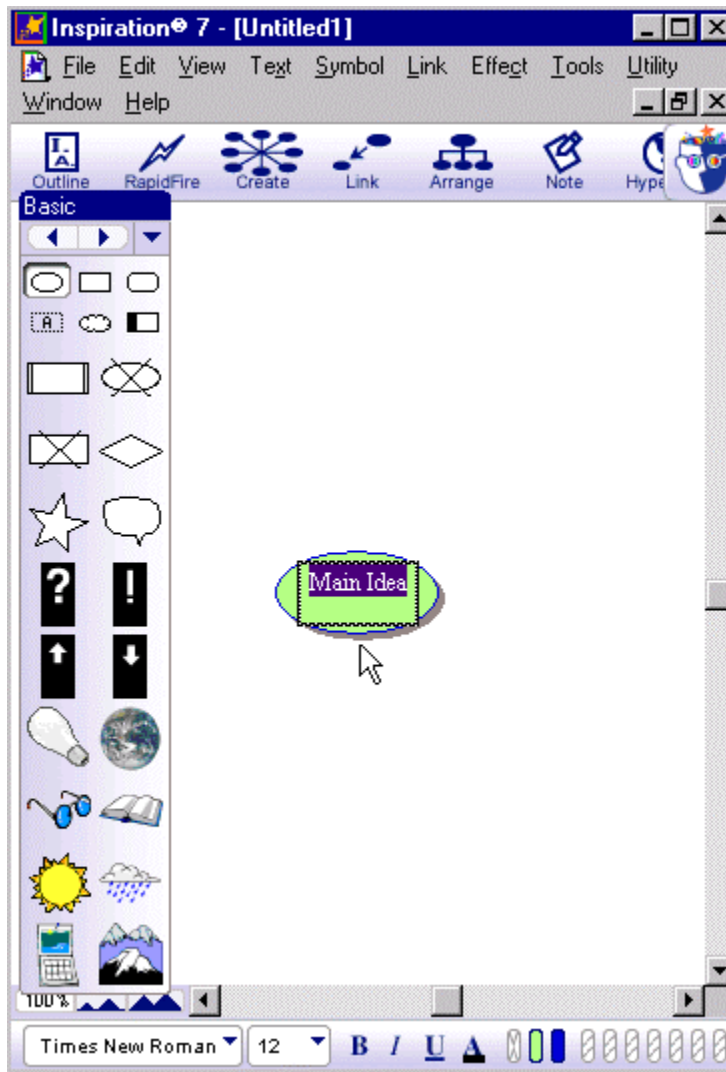


3. The Symbol palette is displayed on the left side.

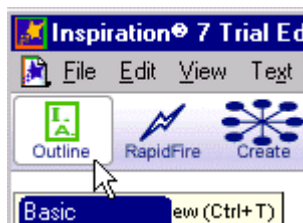


Creating an outline

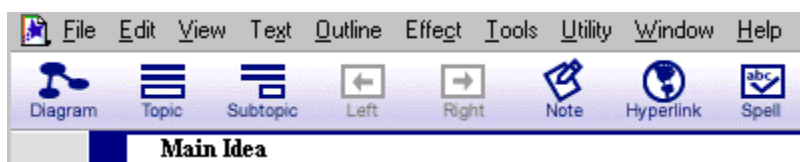
1. After launching Inspiration 7, an untitled window opens in "Diagram view".



2. For this tutorial, we will be creating an outline and automatically generating a diagram from it. To switch to outline view, Click the "Go to outline button" located on the "Diagram tool bar".



3. The outline view tool bar appears. To add a primary or main idea, select the "Main Idea" text, and begin typing your new topic.



4. To add a new topic, click the "Topic" button.



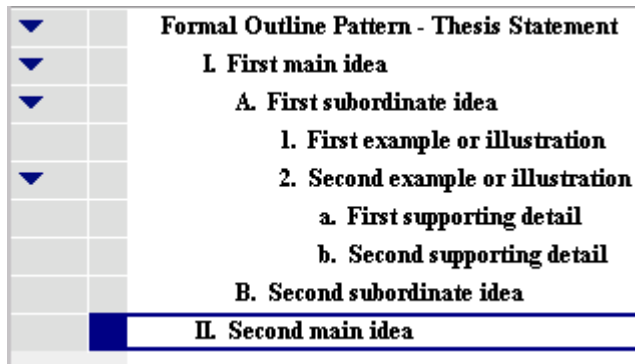
5. Inspiration inserts a new topic and automatically assigns it a prefix. You can start typing the topic.



6. To add a subtopic, click on the "Subtopic" button.

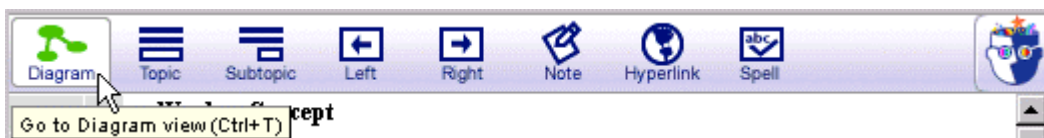


7. This is an example of a finished outline.

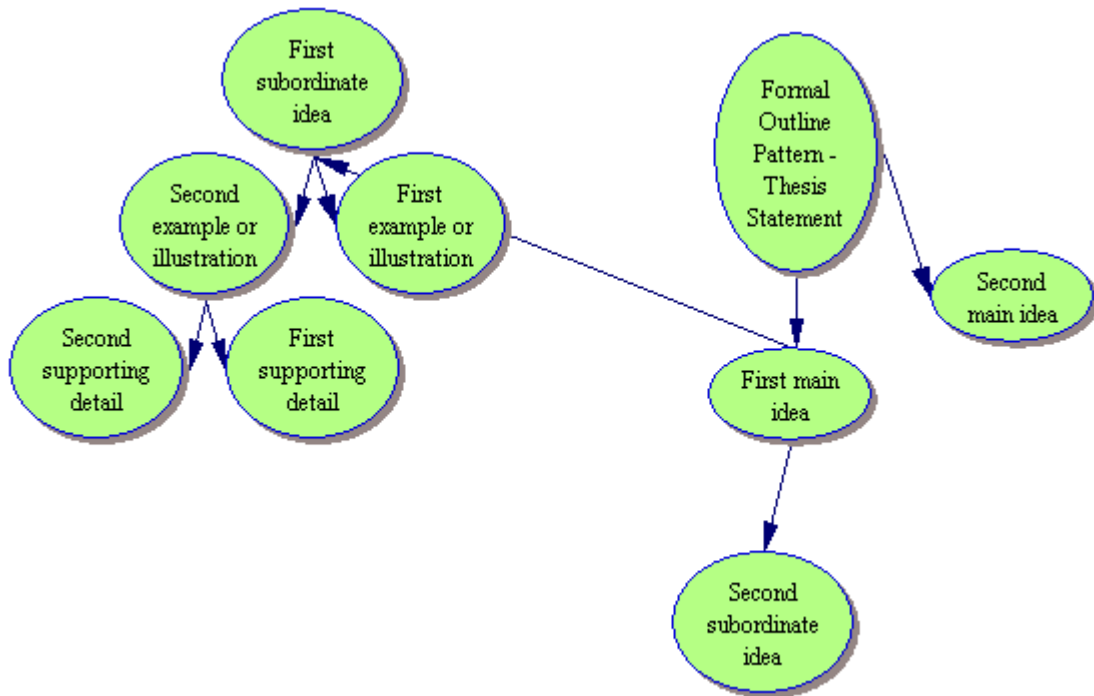


Creating a diagram

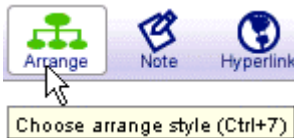
1. Creating a diagram from your outline is simple. On the Outline toolbar click the "Diagram" button.



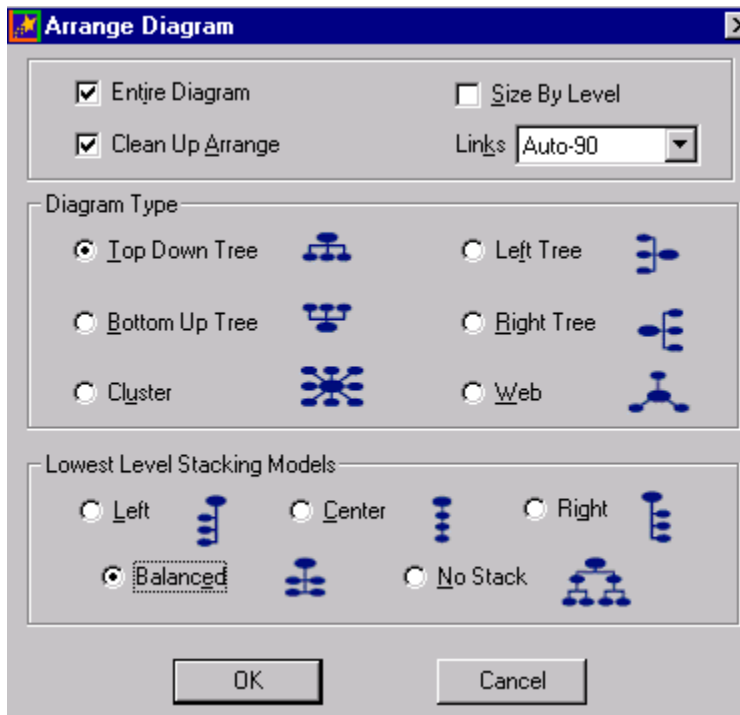
- This is an example of the outline created for this tutorial in diagram view.



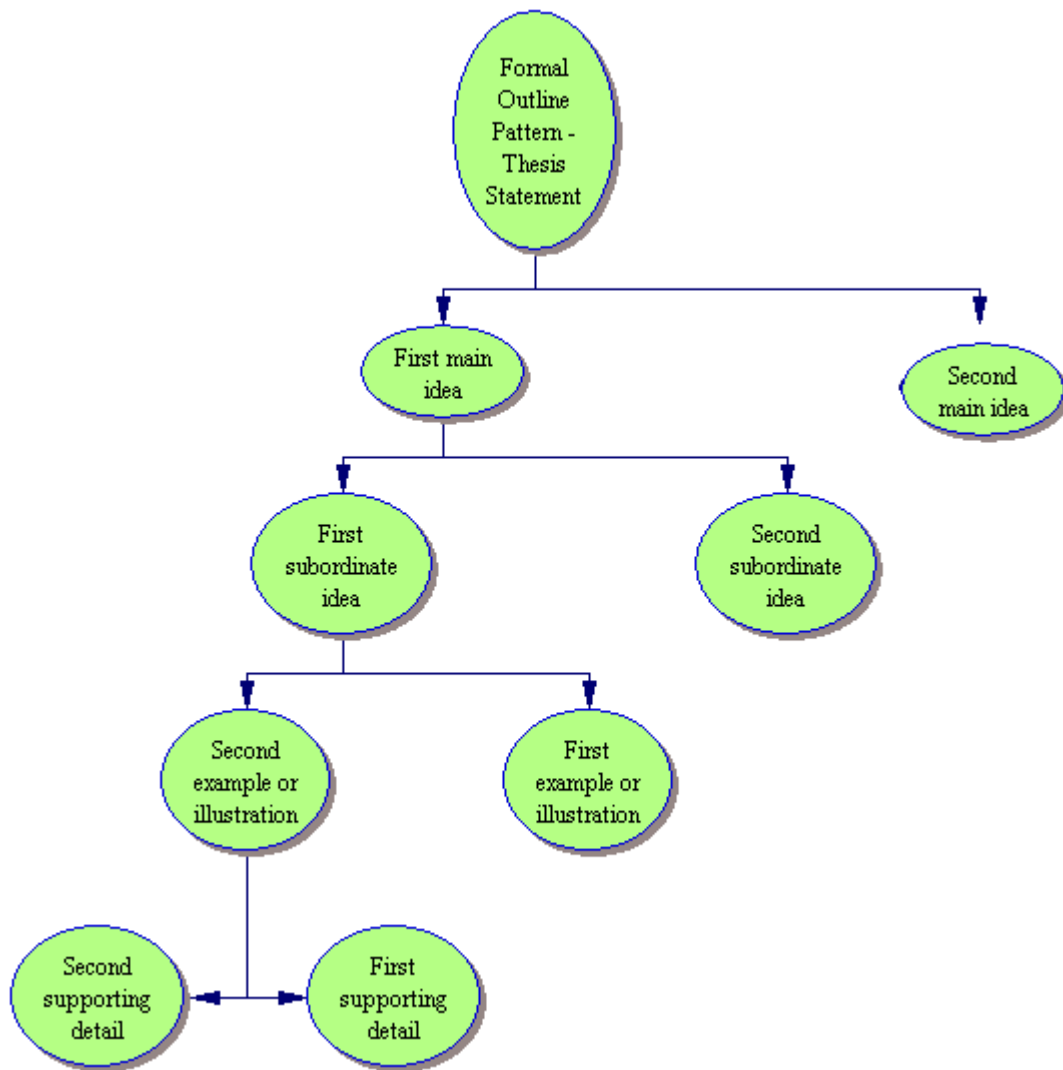
- This diagram can be rearranged by using the Arrange tool.



- There are many options to choose from. In this example, Clean Up Arrange, Top Down Tree and Balanced are selected. You might even be able to simply check Clean Up Arrange and nothing else. Click OK when done.

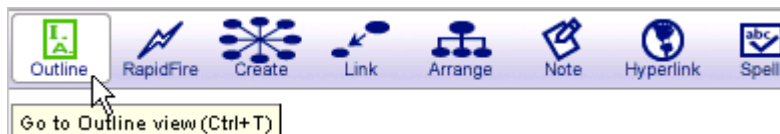


5. Here is an example of the above diagram rearranged as the "Top Down Tree, Balanced" diagram type.

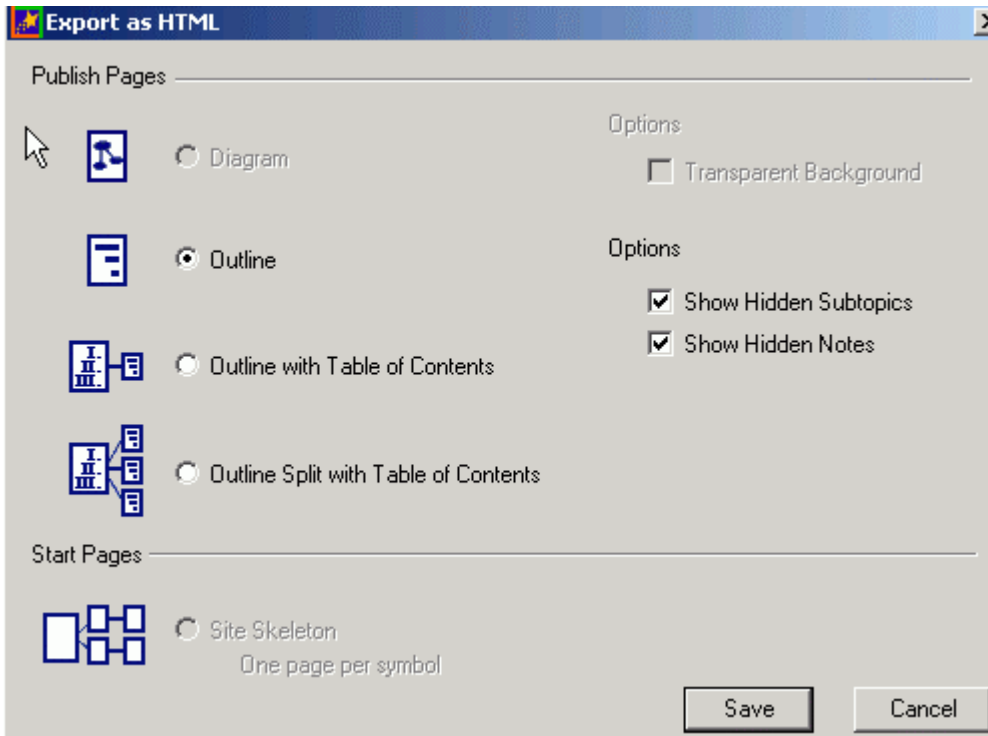


Exporting an outline as HTML

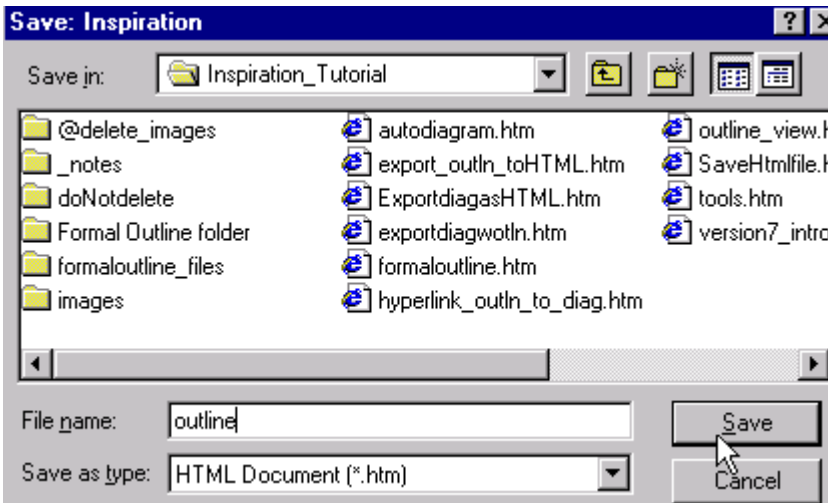
1. If you are not already in the outline view, click its button on the Diagram toolbar.



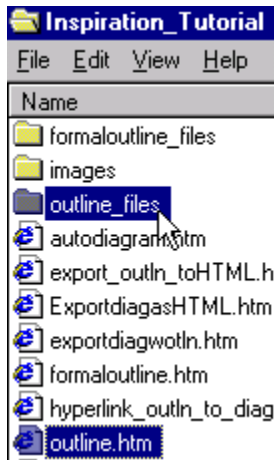
2. To save an outline as an html file, click the File menu, then select "Export as HTML". By default, Outline should be selected. Click Save.



3. Make sure you save your outline file in the same folder with any other html files you are going to use with it (i.e. files that link to or from this outline file). If you don't have a folder for an existing web site, create one. Name the file something like "outline."

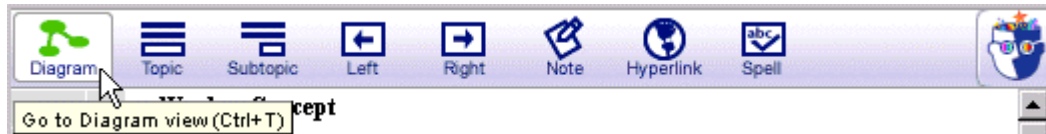


4. When you save your outline into a folder, Inspiration automatically adds a folder with the same name as the outline, plus "_files", highlighted below.

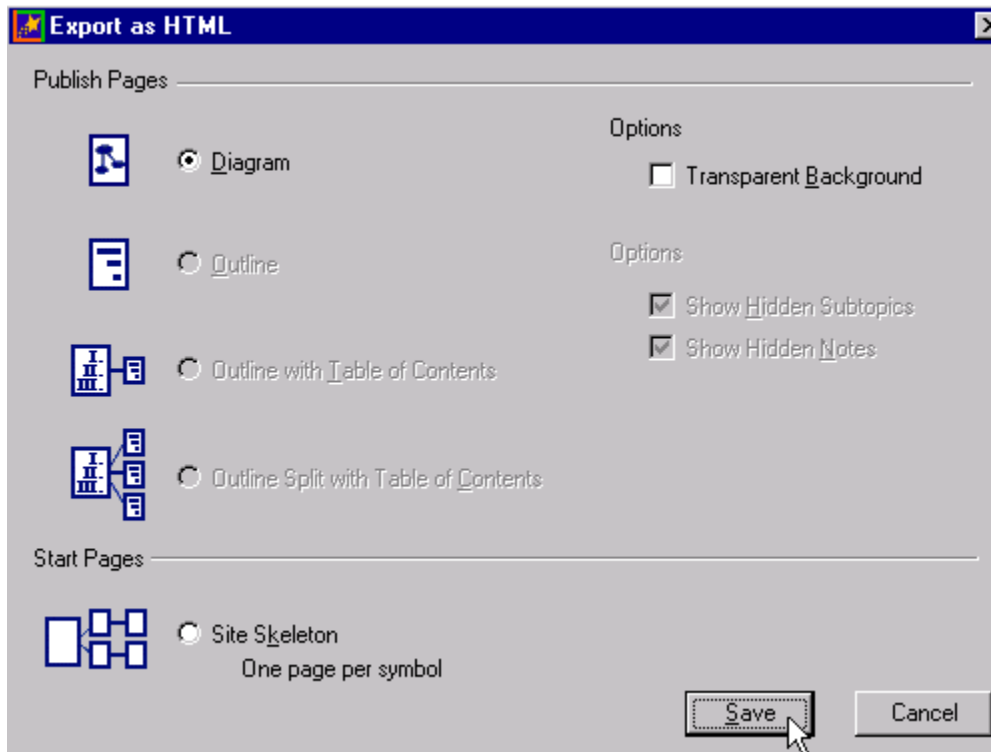


Exporting a diagram as HTML

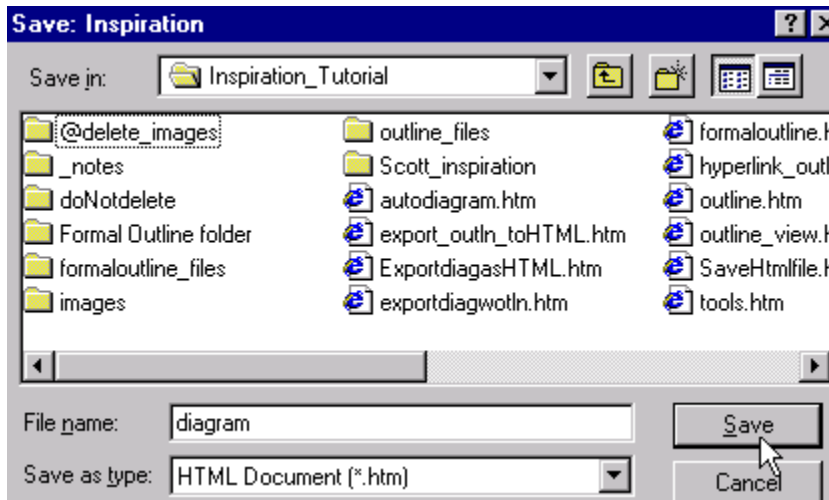
1. If you are not already in the diagram view, click the diagram view button on the Outline toolbar.



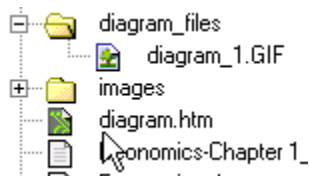
2. To save a diagram as an html file, click the File menu, then select "Export as HTML". By default, Diagram should be selected. Click Save.



3. Name the file, and again, save it in the folder with the rest of your html files.



4. When you save your diagram, Inspiration automatically creates a folder within the same folder you just saved into. The new folder's name will be "diagram(or whatever you name it)_files." A picture of the diagram will be in this new folder and will end with a .gif extension.

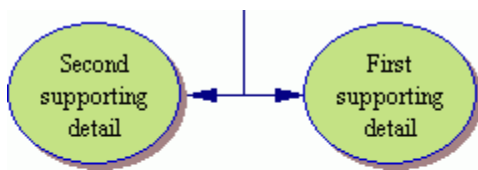


5. If you are putting this web page into an existing web site, move the diagram_1.GIF file into the images folder along with your other images. Launch Dreamweaver, open the diagram.htm file to make certain the 'diagram_1.GIF appears in the diagram.htm page. If it doesn't, reestablish the link.
6. If you plan to use your Inspiration files again (and you probably will), make sure you go back to Inspiration and save them by selecting Save from the File menu.

Linking from diagram to outline

When you post a diagram from Inspiration onto the web, the diagram won't be of much use to blind students who use a screen reader like JAWS to access web content. You can insert alt labels to the diagram in Dreamweaver to the entire diagram, but a better way is to simply link the diagram to the outline, which is a text document and readable by JAWS.

1. Open Dreamweaver, and open the diagram.htm page. Create a link from the diagram file to the outline.htm file. Save the page.

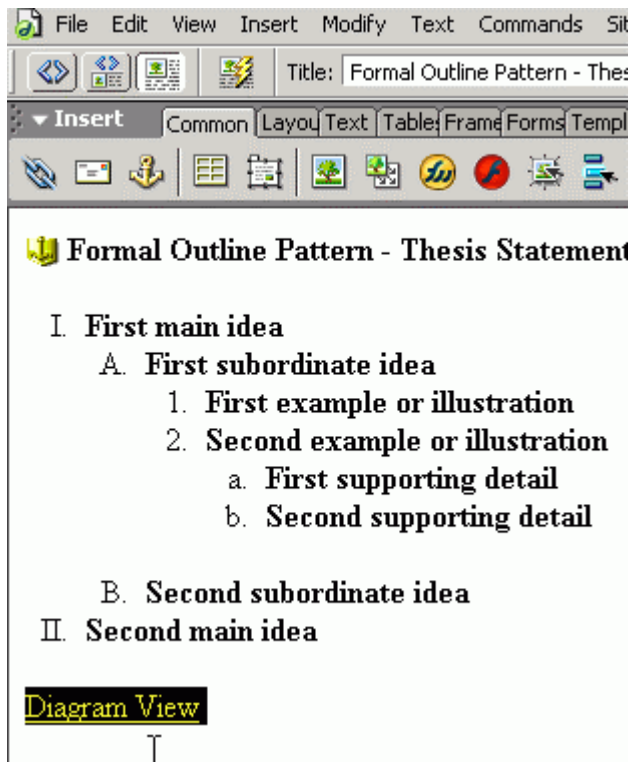


Outline View

This diagram created using Inspiration® 7

You can delete the text that Inspiration automatically adds: "This diagram created using Inspiration® 7 by Inspiration Software®, Inc.". This is optional, and you won't get into trouble for removing this information.

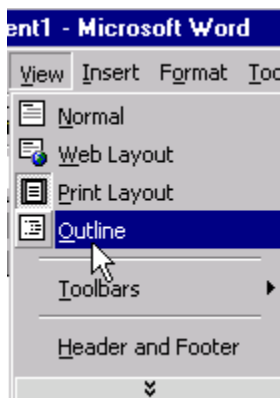
2. Now open outline.htm, and create a link back from the outline file to the diagram file. Save the page.



If there is a "Back to top" link at the bottom of the page, delete that.

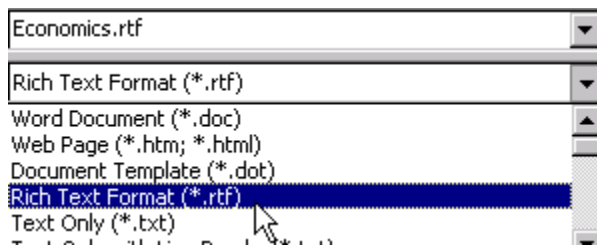
Importing an MS Word outline

1. The outline subject used for this part of the tutorial is Economics. Open Microsoft Word and click on the "View" menu, and select "Outline".

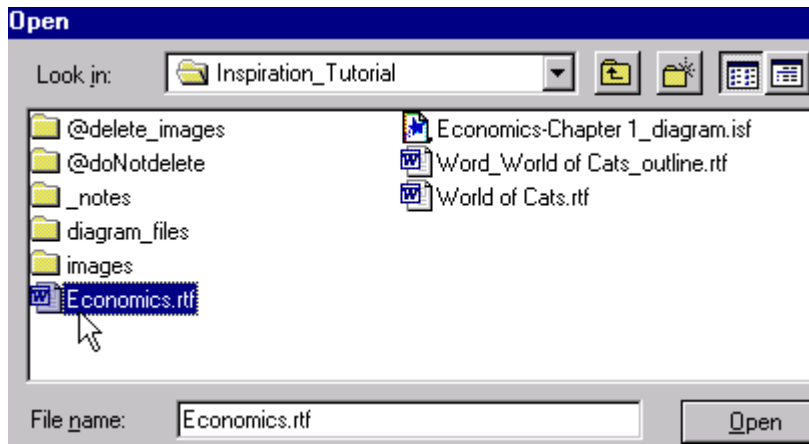


2. Create the outline.

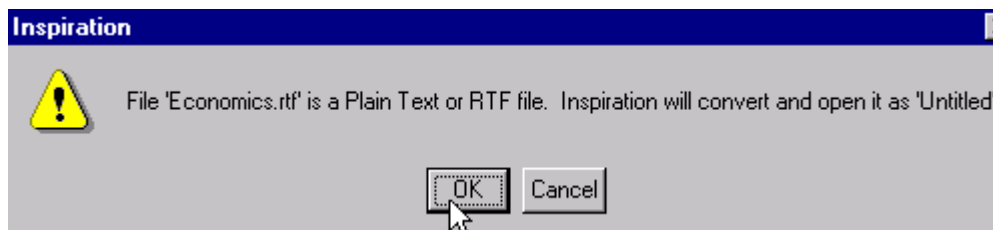
3. Then do a "Save as" and choose "Rich Text Format (*.rtf)" in the drop-down list.



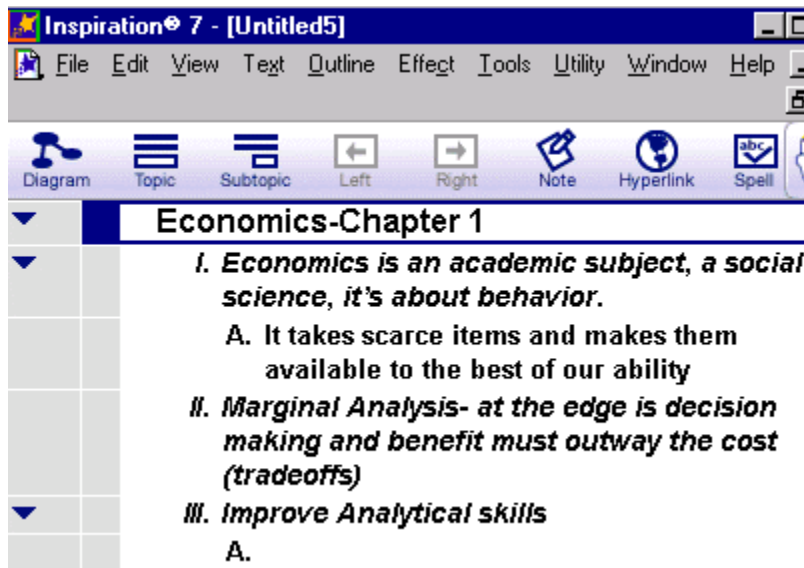
4. Close your ".rtf" file in Word.
5. If Inspiration is not already launched, launch it, and open the ".rtf" file that you just created.



6. Then a dialog box will appear, saying that Inspiration will convert the file. Click OK.



- The .rtf file will be converted.



- If you want to make a diagram from this, click the Diagram button. When it comes up as a diagram, you might have to click the Arrange button, then check the Clean Up Arrange box in the Arrange Diagram dialog box that appears. Click OK.
- Save your file.