

**Chabot-Las Positas
Community College District**

**Student
Characteristics
and
Outcomes
2006-2007**

**Executive Summary
for the Governing Board**

Chabot College Office of Institutional Research

**Chabot-Las Positas
Community College District**

**Student
Characteristics
and
Outcomes
2006-2007**

**Executive Summary
for the Governing Board**

November 2007

**Prepared by:
Carolyn Arnold, Coordinator of Institutional Research and Grants
Rajinder S. Samra, Research Analyst**

Chabot College Office of Institutional Research

Chabot • Las Positas Community College District

**Board of Trustees
2007-2008**

Dr. Arnulfo Cedillo, President

Mr. Carlo Vecchiarelli, Secretary

Mrs. Isobel F. Dvorsky

Mr. Donald L. “Dobie” Gelles

Dr. Hal Gin

Dr. Alison Lewis

Dr. Barbara Mertes

Mr. Dayne Nicholls, Chabot College Student Trustee

Ms. Frances Morrissey, Las Positas College Student Trustee

Dr. Joel Kinnamon, Chancellor

Dr. Robert Carlson, President, Chabot College

Mr. Robert Kratochvil, Interim President, Las Positas College

Chabot and Las Positas Colleges Student Characteristics and Outcomes

Table of Contents

	Page
I. Student Characteristics	
Student Characteristics:	
Comparisons to all California Community Colleges: Fall 2006.....	1
Enrollment status, Enrollment pattern, Educational goal, Gender, Race-ethnicity, Age, Educational level	
Student Characteristics: Fall 2006	2
Student type, Citizenship, Official residence, Previous college of students transferring into C-LPCCD, Local residence, High school districts of origin of new students	
II. Student Outcomes	
Definitions: Success, withdrawal, persistence and transfer rates	3
Student Outcomes: Comparisons to all California Community Colleges:.....	4
Course success and withdrawal rates: Fall 2006	
Persistence rates: Fall 2006- Spring 2007	
Transfer rates: 1993-2001	
Course success and withdrawal rates: Fall 1994 to Fall 2006	
Chabot College.....	5
Las Positas College	6
Persistence rates of new students by gender and race-ethnicity:	
Fall 1996 to Spring 1997 through Fall 2006 to Spring 2007	
Chabot College.....	7
Las Positas College	8
Persistence rates of new students by Matriculation service:	
Fall 2001 to Spring 2002 through Fall 2006 to Spring 2007	
Chabot College.....	9
Las Positas College	10
AA/AS Degrees and Occupational Certificates: 1994-2007.....	11
Transfer rates and number of transfers: by college and statewide: 1999-2007.....	12
Transfer trends to CSU and UC: by college and statewide: 1993-2006.....	13
Top Public Universities of Chabot Transfers: Academic Years 1998-99 to 2006-07.....	14
Top Public Universities of Las Positas Transfers: Academic Years 1998-99 to 2006-07.....	15

Chabot and Las Positas Colleges Student Characteristics

Comparisons to all California Community Colleges (CCC's)

Chabot College students are similar to the statewide percentages in most areas, such as gender, age, educational levels, and most enrollment status categories and educational goals. However, Chabot has more race-ethnicity diversity than the state, and larger percentages of day or day and evening students. Chabot, on the other hand, has a smaller proportion of returning students and those with personal development and occupational certificate or job training as their educational goal. Las Positas students are similar to the statewide percentages in a number of areas as well—gender, most age groups, enrollment patterns, educational levels, and most enrollment status categories and educational goals. However, Las Positas has a higher proportion of students aged 19 or younger. In addition, it has lower proportions of those between 25 to 39 and individuals with personal development and occupational certificate or job training as their educational goal. The race-ethnicity of Las Positas students is less diverse than the state, but it reflects its local population.

	Fall 2006	Fall 2006			Fall 2006	Fall 2006	
Total Students:	1,643,914	Chabot	LPC	Total Students:	1,643,914	Chabot	LPC
		13,942	7,796			13,942	7,796
<u>Enrollment Status*</u>	<u>Percentage of Students</u>			<u>Gender*</u>	<u>Percentage of Students</u>		
First time any college	19%	19%	20%	Female	56%	57%	55%
New transfer	10%	10%	11%	Male	44%	43%	45%
Returning***	18%	14%	12%				
Continuing	53%	56%	55%				
In High School	**	<1%	1%				
<u>Enrollment Pattern*</u>				<u>Race-ethnicity*</u>			
Day or Day & Eve	72%	85%	75%	African-American	8%	15%	4%
Evening or Eve & Sat	28%	15%	25%	Asian-Amer/Pac Is.	14%	21%	11%
				Filipino	4%	10%	4%
				Latino	32%	24%	16%
				Native American	1%	1%	1%
				White	39%	26%	61%
				Other	2%	2%	3%
<u>Educational Goal</u>				<u>Age*</u>			
Transfer				19 or younger	25%	24%	32%
(with/without AA/AS)	35%	35%	37%	20-24	27%	30%	28%
AA/AS only				25-29	12%	12%	9%
(not transfer)	7%	8%	6%	30-39	14%	13%	11%
Occupational certificate				40-49	10%	9%	10%
or job training	18%	12%	13%	50 or older	12%	11%	10%
Personal development							
(intellectual/cultural,				<u>Student Educational Level*</u>			
(basic skills, GED)	13%	8%	9%	Special Admit K-12	4%	3%	2%
Other or Undecided	15%	18%	17%	Freshman (< 30 units)	60%	56%	57%
Unknown	12%	18%	18%	Sophomore (30-59 un.)	14%	16%	16%
				Other undergraduate	8%	9%	7%
				AA/AS degree	5%	6%	6%
				BA/BS or higher deg.	10%	10%	13%

NOTES: * Students with 'unknown' characteristics not included. ** Not available. ***Includes both returning and returning transfer students.

SOURCES: All CCC's: Chancellor's Office MIS Statistical Library

Chabot and Las Positas Colleges: C-LPCCD Institutional Research Dataset, Fall Final Census

Statewide Educational Goal: special data request provided by Patrick Perry from the CCC's Chancellor's Office.

Chabot and Las Positas Colleges Student Characteristics

Fall 2006 Census

	Number		Percentage			Number		Percentage	
	Chabot	LPC	Chabot	LPC		Chabot	LPC	Chabot	LPC
Total Students:	13,942	7,796	100%	100%	Total Students:	13,942	7,796	100%	100%
Student Type					Local residence: District and other cities *				
Full-time					Chabot District			67%	7%
12 or more units	4,091	2,880	29%	37%	Hayward	4,133	99	30%	1%
Part-time					San Leandro	1,921	78	14%	1%
6 to 11.5 units	4,133	2,117	30%	27%	Union City	1,413	22	10%	<1%
.5 to 5.5 units	5,476	2,790	39%	36%	Castro Valley	1,079	338	8%	4%
Only Non-credit units	242	9	2%	<1%	San Lorenzo	743	17	5%	0%
					Las Positas District			2%	62%
					Livermore	103	2,493	1%	32%
					Pleasanton	119	1,614	1%	21%
					Dublin	111	760	1%	10%
					Other major cities (over 100 students)			19%	17%
					Fremont	1,046	64	8%	1%
					Oakland	971	47	7%	1%
					Newark	336	11	2%	0%
					Alameda	165	11	1%	0%
					Tracy	61	626	<1%	8%
					San Ramon	80	385	1%	5%
					Danville	26	153	<1%	2%
					Other local cities**	434	130	3%	2%
					New Students: High school districts of origin				
						Number		Percentage	
						Chabot	LPC	Chabot	LPC
					Chabot District HS	1,194	130	45%	8%
					Castro Valley	117	92	4%	6%
					Hayward	374	12	14%	1%
					New Haven	244	5	9%	0%
					San Leandro	166	5	6%	0%
					San Lorenzo	265	9	10%	1%
					Moreau	28	7	1%	0%
					LPC District HS	34	800	<1%	50%
					Dublin	9	118	<1%	7%
					Livermore	10	405	<1%	25%
					Pleasanton	15	277	<1%	17%
					Other Alameda Co.	477	49	18%	3%
					Other Bay Area	135	88	5%	6%
					Other California	602	378	23%	24%
					Other State	83	59	3%	4%
					Other Country	150	86	6%	5%
					All new students:	2,675	1,590	100%	100%

NOTE: * Does not include students with unknown Zip

** Other local cities: Berkeley, Concord, Pittsburg, Walnut Creek, Antioch, Richmond, and cities in Santa Clara County, San Francisco County, and San Mateo County.

SOURCE: C-LPCCD Institutional Research Dataset, Fall Final Census

Chabot and Las Positas Colleges

Student Outcomes

Definitions

Success, withdrawal, and persistence rates

Terms used

Enrollments/enrolled:	Enrolled on Census Day (end of 4th week) and received an A-F, Credit (CR), No Credit (NC), Withdrawal (W) or Incomplete (I)
By course enrollments:	Total based on every COURSE enrollment, so students are counted for each course section taken
By students:	Total based on the number of STUDENTS (headcount), regardless of number of courses taken
Success in course:	Enrolled at end of course and received an A, B, C, or Credit
Non-success in course:	Enrolled at end of course and received a D, F, No Credit, or Incomplete
Completion of course:	Enrolled at end of course and received a successful or non-successful grade
Withdrawal:	Dropped or left course after Census and received a withdrawal

Definitions

<u>Course success, non-success, and withdrawal rates</u>	
Total enrollments:	Successful grades + Non-successful grades + Withdrawals
<i>Course success rate:</i>	= $\frac{\text{Number of successful grades}}{\text{Total enrollments}} * 100$
<i>Course non-success rate:</i>	= $\frac{\text{Number of non-successful grades}}{\text{Total enrollments}} * 100$
<i>Course withdrawal rate:</i>	= $\frac{\text{Number of withdrawals}}{\text{Total enrollments}} * 100$
<u>Student withdrawal rates</u>	
Total students:	Number of students enrolled on Census Day
<i>Student withdrawal rate:</i>	= $\frac{\text{Number of students with a withdrawal in all their courses}}{\text{Total students}} * 100$
<u>Persistence from term to term</u>	
Of students who enroll by Census Day in at least one course during one term (term 1), the percentage who are enrolled in at least one course by Census Day in the following term (term 2)	
<i>Persistence rate:</i>	= $\frac{\text{Number of students enrolled in any courses in term 2}}{\text{Number of students enrolled in any courses in term 1}} * 100$

<u>Transfer rates</u> (calculated by the California Community Colleges Chancellor's Office)	
<i>Actual transfer rate:</i> Of those who enrolled in a California Community College (CCC) as a first-time student in a fall term and, who, within a period of six years 1) attempted transfer-level math or English (regardless of outcome) and 2) completed at least 12 units in the CCC system, the percentage who transferred to a four-year college or university nationwide.	
<i>Expected transfer rate:</i> The actual transfer rate is calculated for each community college and adjusted for five factors that are outside the control of local colleges: academic preparedness index, percentage of students over the age of 25, county per capita income, county unemployment rate, and miles to the nearest CSU.	

Chabot and Las Positas Colleges Student Outcomes

Comparisons* to all California Community Colleges (CCC's)

Compared to the state average for all California community colleges, Chabot has a slightly lower success rate and Las Positas has a slightly higher success rate. However, both Chabot and Las Positas students' overall persistence rates are above the state average. In addition, both colleges have transfer rates at or above their expected rates.

Course Success and Withdrawal Rates: Fall 2006

	All CCC's	Chabot	LPC
Total Credit Enrollments:	3,732,094	37,456	22,347
Percentage of Enrollments			
Success (A,B,C,CR)	67%	65%	68%
Non-success (D,F,NC,I)	17%	13%	13%
Withdrawal	<u>16%</u>	<u>22%</u>	<u>19%</u>
Total Percentage	100%	100%	100%

Persistence Rates: Fall 2006 to Spring 2007

	All CCC's	Chabot	LPC
All Students in Fall:	1,643,914	13,942	7,796
Percentage who persist from Fall to Spring			
Percentage of all students:	59%	65%	67%
Type of student			
New	60%	64%	78%
Continuing	69%	72%	73%
New transfer	43%	51%	50%
Returning	47%	52%	44%

Transfer Rates to Four-year Colleges: 1993 to 2001

<u>Cohorts</u>	Transfer Rate*					
	All CCC's		Chabot		Las Positas	
	Actual	Expected	Actual	Expected	Actual	Expected
1993-1999 Cohort	32.0%	-	34.6%	33.8%	40.7%	38.6%
1994-2000 Cohort	33.7%	-	33.7%	34.8%	40.4%	39.2%
1995-2001 Cohort	34.2%	-	37.8%	32.2%	41.4%	40.2%

NOTES: Latest available comparison data for all California Community Colleges

*A college's transfer rate should be compared with its own expected rate, rather than with the transfer rate of other colleges. See definitions of actual and expected transfer rates on pages 3 and 12.

SOURCES: <<http://misweb.cccco.edu/mis/onlinestat/onlinestat.cfm>>; C-LPCCD Institutional Research Dataset; Chancellor's Office, *Transfer Capacity and Readiness in the California Community College*, March 2002.

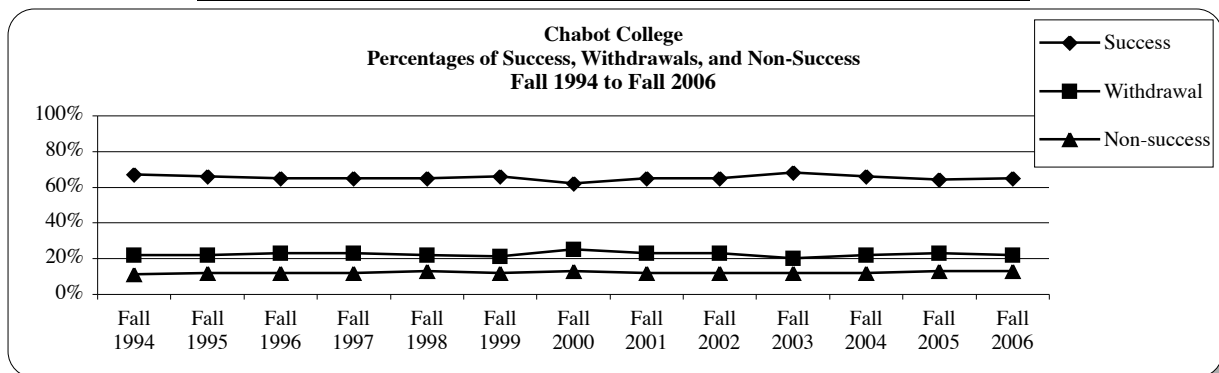
Persistence rate for all CCCs: special data request provided by Tonia Lu from the CCC's Chancellor's Office.

Chabot College
Course success and withdrawal rates, by courses and students
Fall 1994 to Fall 2006
All students

Except for Fall 2000, from Fall 1994 to Fall 2006, success rates and withdrawal rates have been very stable at Chabot—they have not fluctuated by more than two percentage points around a success rate of 66 percent and a withdrawal rate of 22 percent. The percentage of students who withdrew from all courses has also been stable since Fall 1994. Except for Fall 2000, the percentage of students who withdrew from all courses has not changed by more than one percentage point from 13 percent.

By course enrollments				
Quarter/ semester	Number of course enrollments at Census	Percentage of course enrollments		
		Success (A,B,C, CR)	Non-success (D, F, NC, I)	Withdrawal (W)
Fall 1994	35,525	67%	11%	22%
Fall 1995	36,590	66%	12%	22%
Fall 1996	37,744	65%	12%	23%
Fall 1997	36,914	65%	12%	23%
Fall 1998	36,681	65%	13%	22%
Fall 1999	37,353	66%	12%	21%
Fall 2000	36,173	62%	13%	25%
Fall 2001	37,581	65%	12%	23%
Fall 2002	41,537	65%	12%	23%
Fall 2003	39,577	68%	12%	20%
Fall 2004	40,019	66%	12%	22%
Fall 2005	38,746	64%	13%	23%
Fall 2006	37,456	65%	13%	22%

By students		
Quarter/ semester	Number of students enrolled	Percentage of students
		Withdrew from all courses
Fall 1994	13,019	13%
Fall 1995	13,309	13%
Fall 1996	13,563	14%
Fall 1997	13,495	14%
Fall 1998	13,594	13%
Fall 1999	14,134	13%
Fall 2000	14,252	16%
Fall 2001	15,149	14%
Fall 2002	16,339	14%
Fall 2003	15,075	12%
Fall 2004	15,226	13%
Fall 2005	14,441	13%
Fall 2006	13,942	13%



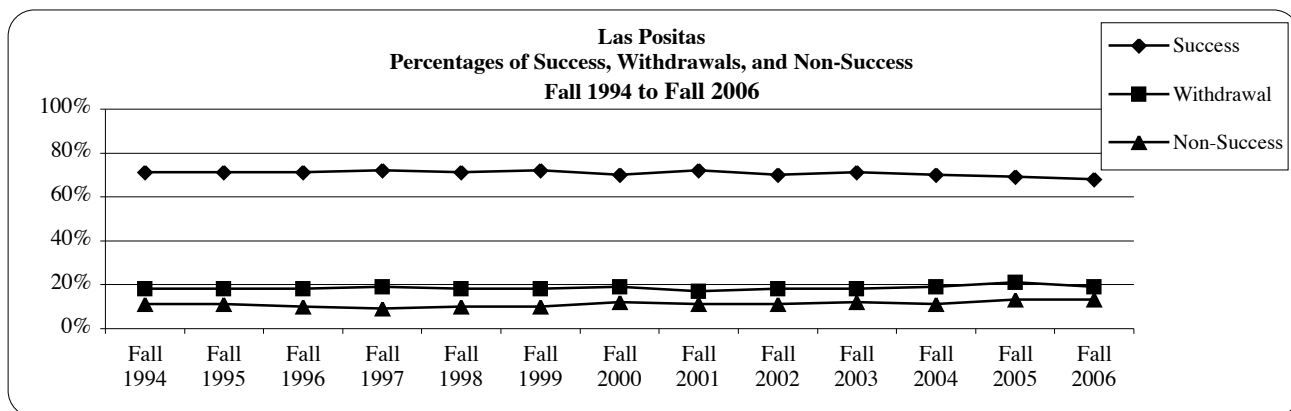
Las Positas College
Course success and withdrawal rates, by courses and students
Fall 1994 to Fall 2006

All students

Since Fall 1994, both withdrawal rates and success rates have remained virtually the same at Las Positas College— they have not varied by more than two percentage points from a success rate of 70 percent and a withdrawal rate of 19 percent. In addition, the percentage of students who withdrew from all courses has not varied by more than one percentage point from 11 percent.

By course enrollments				
Quarter/ semester	Number of course enrollments at Census	Percentage of course enrollments		
		Success	Non-success	Withdrawal
		(A,B,C, CR)	(D, F, NC, I)	(W)
Fall 1994	13,081	71%	11%	18%
Fall 1995	14,239	71%	11%	18%
Fall 1996	15,088	71%	10%	18%
Fall 1997	16,671	72%	9%	19%
Fall 1998	18,128	71%	10%	18%
Fall 1999	18,268	72%	10%	18%
Fall 2000	19,124	70%	12%	19%
Fall 2001	19,946	72%	11%	17%
Fall 2002	22,087	70%	11%	18%
Fall 2003	20,386	71%	12%	18%
Fall 2004	20,501	70%	11%	19%
Fall 2005	20,682	69%	13%	21%
Fall 2006	22,347	68%	13%	19%

By students		
Quarter/ semester	Number of students enrolled	Percentage of students
		Withdrew from all courses
Fall 1994	5,222	12%
Fall 1995	5,572	11%
Fall 1996	5,915	12%
Fall 1997	6,412	12%
Fall 1998	6,978	11%
Fall 1999	6,951	10%
Fall 2000	7,413	12%
Fall 2001	7,853	11%
Fall 2002	8,588	11%
Fall 2003	7,395	11%
Fall 2004	7,334	11%
Fall 2005	7,332	11%
Fall 2006	7,796	10%



Chabot College
Persistence rates of new students
by gender and race-ethnicity
Fall 1996 to Spring 1997 through Fall 2006 to Spring 2007
New students

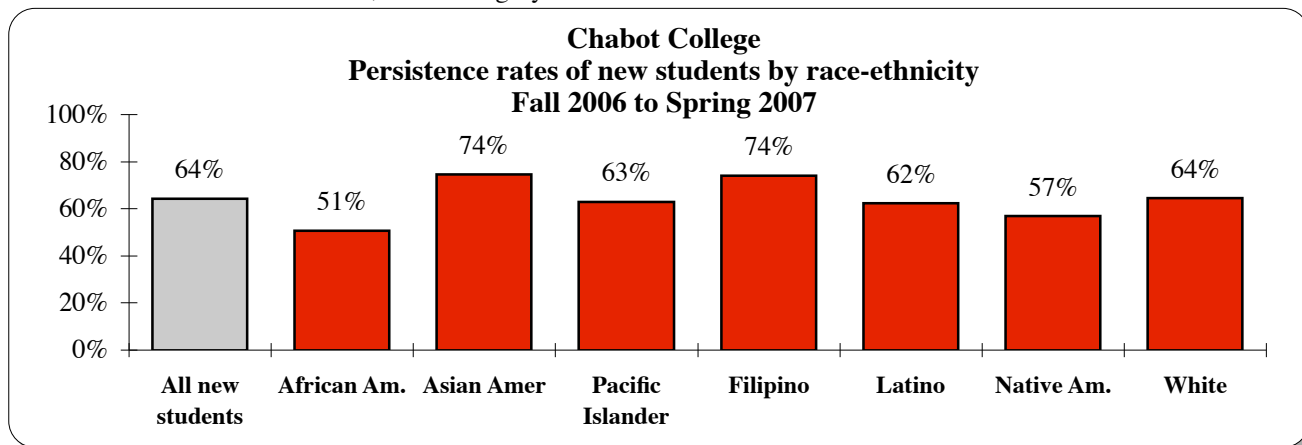
Persistence rates measure the proportion of students in one term who continue to enroll in college from one term to the next. Term to term persistence rates are defined as the percentage of students enrolled as of Census Day in the first term who are subsequently enrolled as of Census Day in the following term.

Usually, almost two thirds of new students in the Fall persist to the Spring semester. In Fall 2006, the persistence rate of new students was 64 percent, which is a one percentage point decrease from the previous year. Students in most of the race-ethnicity groups were near or above this average. However, in Fall 2006, Native American and African-American students had persistence rates that were at least seven percentage points lower than the average rate.

Persistence rates of new students

	All New Stds.	Gender		Race-ethnicity								
		Female	Male	African Amer.	Asian Amer.	Pacific Islander	Filipino	Latino	Native Amer.	Middle Eastern	White	Other
Fall enrollments												
Fall 96	2,112	1,023	1,022	347	323	60	186	419	*	23	641	95
Fall 97	2,159	1,120	981	354	308	55	165	449	21	21	677	109
Fall 98	1,933	954	927	314	309	65	141	424	28	26	521	105
Fall 99	2,256	1,127	1,073	398	345	65	151	524	24	35	598	116
Fall 00	2,086	1,031	1,010	303	351	64	182	513	20	25	500	128
Fall 01	2,505	1,291	1,111	326	397	65	195	529	27	31	788	147
Fall 02	2,499	1,309	1,106	320	381	70	197	636	*	37	710	133
Fall 03	2,334	1,179	1,094	346	395	47	210	658	*	23	528	112
Fall 04	2,771	1,425	1,264	429	400	85	238	734	21	26	628	210
Fall 05	2,862	1,447	1,332	482	411	97	261	755	24	*	581	243
Fall 06	2,650	1,277	1,288	431	394	83	215	722	30	*	533	237
Fall to Spring persistence rates												
F96/S97	66%	68%	64%	53%	74%	65%	76%	63%	*	74%	67%	65%
F97/S98	63%	66%	62%	58%	75%	64%	67%	65%	62%	57%	59%	62%
F98/S99	64%	66%	62%	53%	73%	58%	65%	60%	61%	77%	67%	67%
F99/S00	63%	63%	63%	52%	75%	57%	72%	57%	50%	77%	67%	59%
F00/S01	64%	68%	62%	52%	76%	61%	69%	63%	70%	60%	63%	67%
F01/S02	64%	65%	64%	63%	77%	60%	67%	61%	63%	52%	59%	73%
F02/S03	63%	64%	63%	54%	74%	60%	75%	64%	*	78%	58%	59%
F03/S04	68%	68%	69%	63%	75%	62%	72%	66%	*	65%	70%	71%
F04/S05	64%	65%	64%	54%	75%	67%	72%	64%	43%	50%	64%	58%
F05/S06	65%	66%	65%	57%	73%	69%	71%	61%	54%	*	69%	68%
F06/S07	64%	63%	65%	51%	74%	63%	74%	62%	57%	*	64%	69%

NOTES: * Less than 20 Students; Other category includes other and unknown.



Las Positas College
Persistence rates of new students
by gender and race-ethnicity
Fall 1996 to Spring 1997 through Fall 2006 to Spring 2007

New students

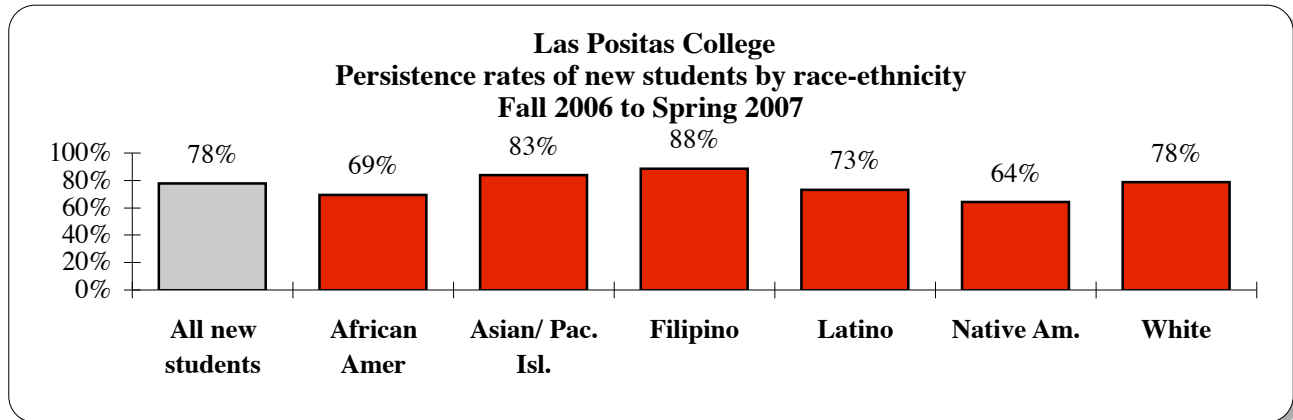
Persistence rates measure the proportion of students in one term who continue to enroll in college from one term to the next. Term to term persistence rates are defined as the percentage of students enrolled as of Census Day in the first term who are subsequently enrolled as of Census Day in the following term.

Persistence rates of new students increased from just above two thirds in Fall 1996 to a little over three fourths by Fall 2003. The persistence rate for Fall 2006 was 78 percent. Females had a much higher persistence rate at 84 percent than males who had a persistence rate of 72 percent. Most race-ethnicity groups had persistence rates that were near or above the average. However, African Americans, Latinos, and Native Americans had persistence rates that were at least five percent lower than the average rate.

Persistence rates of new students

	All New Students	Gender		Race-ethnicity						
		Female	Male	African Amer.	Asian Am/ Pac. Isl	Filipino	Latino	Native Amer.	White	Other
Fall enrollments										
Fall 96	988	507	476	*	38	23	115	*	719	65
Fall 97	1,113	554	554	23	70	*	118	*	809	62
Fall 98	1,119	575	536	27	60	28	139	*	773	77
Fall 99	1,124	572	541	28	58	28	155	*	775	69
Fall 00	1,334	666	649	35	78	30	191	*	902	84
Fall 01	1,327	697	610	30	102	36	195	*	861	93
Fall 02	1,483	763	706	38	98	44	243	*	951	99
Fall 03	1,434	702	726	47	96	41	225	*	912	102
Fall 04	1,517	775	731	45	105	48	241	*	920	123
Fall 05	1,568	780	764	57	159	58	265	*	856	157
Fall 06	1,590	752	800	65	133	59	289	25	823	196
Fall to Spring persistence rates										
F96/S97	69%	69%	68%	*	79%	65%	70%	*	68%	71%
F97/S98	65%	67%	64%	57%	69%	*	57%	*	66%	69%
F98/S99	69%	73%	64%	63%	68%	68%	69%	*	69%	71%
F99/S00	64%	67%	60%	32%	76%	50%	62%	*	65%	61%
F00/S01	69%	70%	69%	54%	74%	87%	60%	*	71%	69%
F01/S02	71%	75%	67%	63%	78%	78%	69%	*	72%	67%
F02/S03	73%	76%	71%	53%	77%	82%	68%	*	76%	69%
F03/S04	76%	76%	77%	70%	77%	80%	70%	*	78%	74%
F04/S05	76%	71%	82%	71%	82%	71%	71%	*	78%	88%
F05/S06	77%	77%	77%	58%	78%	74%	75%	*	80%	70%
F06/S07	78%	84%	72%	69%	83%	88%	73%	64%	78%	79%

NOTES: * Less than 20 students; Other category includes Middle Eastern, other, and unknown.



Chabot College
Persistence rates of new students
by Student Services
Fall 2001 to Spring 2002 through Fall 2006 to Spring 2007

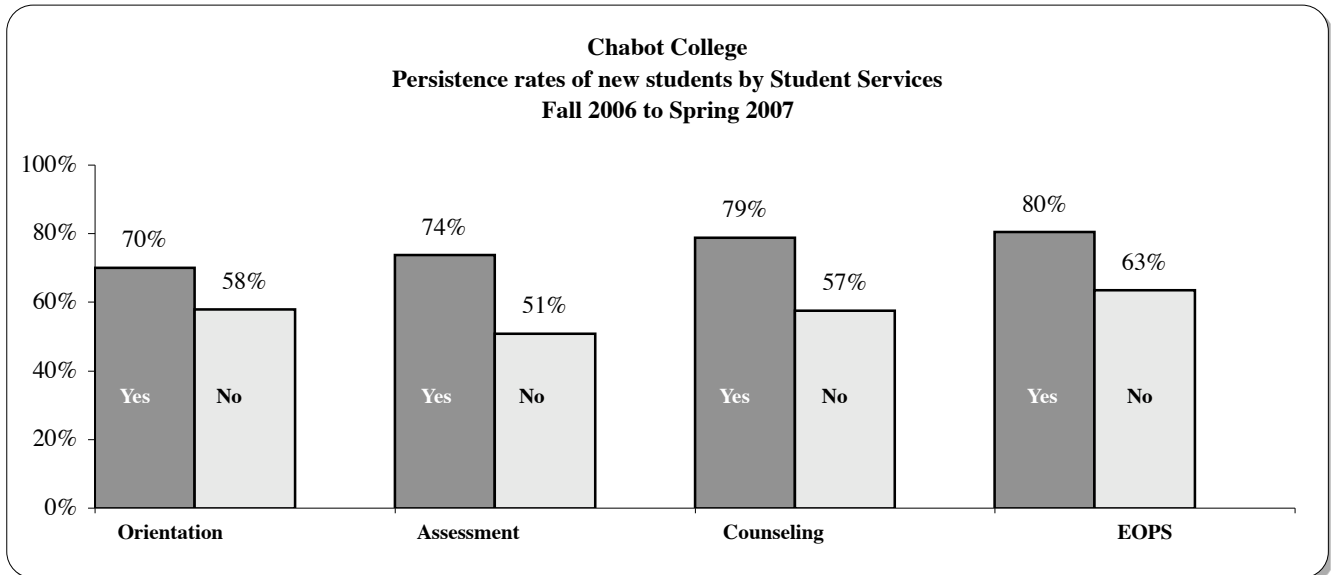
Persistence rates measure the proportion of students in one term who continue to enroll in college from one term to the next. Term to term persistence rates are defined as the percentage of students enrolled as of Census Day in the first term who are subsequently enrolled as of Census Day in the following term.

On average, almost two thirds of new students enrolled in the Fall continued enrolling in the Spring semester. However, the persistence rates of new students who received the Matriculation services of orientation, assessment, counseling, or participated in Extended Opportunity Programs and Services (EOPS) had higher persistence rates than new students without those services.

Persistence rates of new students

	All New Stds.	Matriculation Services							
		Orientation		Assessment		Counseling		EOPS	
		Yes	No	Yes	No	Yes	No	Yes	No
Fall enrollments									
Fall 01	2,505	577	1,928	1,167	1,338	752	1,753	85	2,420
Fall 02	2,499	891	1,608	1,349	1,150	1,112	1,387	98	2,401
Fall 03	2,333	1,286	1,047	1,378	955	639	1,694	97	2,236
Fall 04	2,767	1,439	1,328	1,720	1,047	753	2,014	116	2,651
Fall 05	2,862	1,406	1,456	1,796	1,066	910	1,952	117	2,745
Fall 06	2,650	1,376	1,274	1,548	1,102	835	1,815	56	2,594
Fall to Spring persistence rates									
Fall01/S02	64%	73%	61%	73%	56%	78%	58%	88%	63%
Fall02/S03	63%	74%	57%	73%	52%	76%	53%	83%	62%
Fall03/S04	68%	73%	64%	76%	58%	85%	62%	84%	68%
Fall04/S05	64%	70%	58%	72%	52%	81%	58%	85%	63%
Fall05/S06	65%	69%	62%	73%	53%	79%	59%	77%	65%
Fall06/S07	64%	70%	58%	74%	51%	79%	57%	80%	63%

NOTE: Does not include some matriculation services given to DSPS and CalWorks students separately.



Las Positas College
Persistence rates of new students
by Student Services
Fall 2001 to Spring 2002 through Fall 2006 to Spring 2007

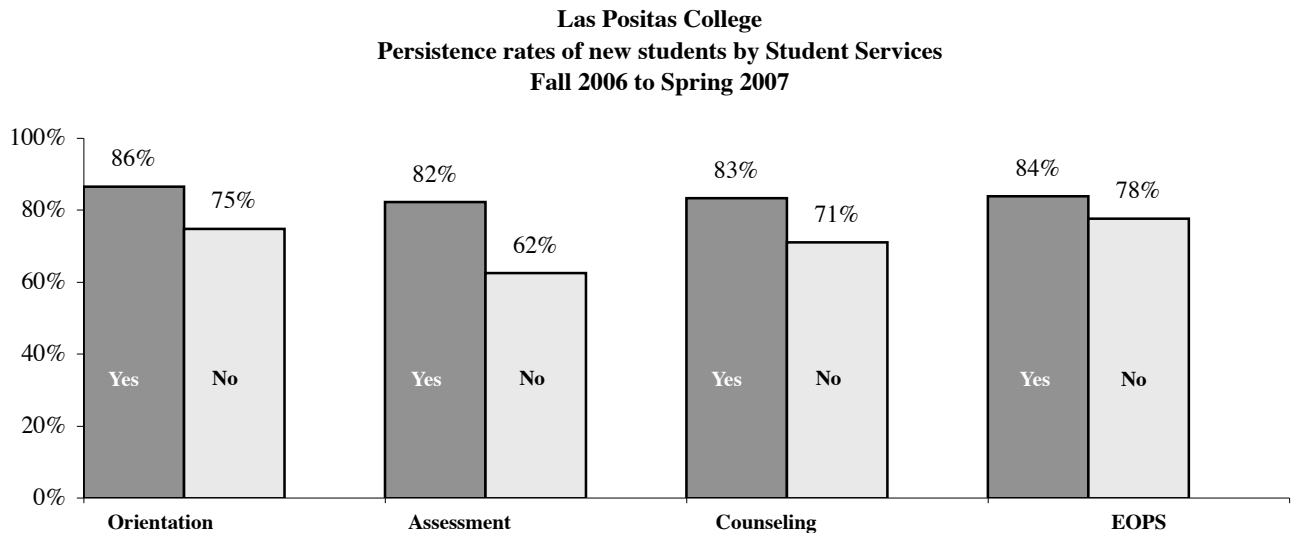
Persistence rates measure the proportion of students in one term who continue to enroll in college from one term to the next. Term to term persistence rates are defined as the percentage of students enrolled as of Census Day in the first term who are subsequently enrolled as of Census Day in the following term.

On average, about three fourths of new students enrolled in the Fall continued enrolling in the Spring semester. However, the persistence rates of new students who received the Matriculation services of orientation, assessment, counseling, or participated in Extended Opportunity Programs and Services (EOPS) had higher persistence rates than new students without those services.

Persistence rates of new students

	All New Stds.	Matriculation Services						EOPS	
		Orientation		Assessment		Counseling		Yes	No
		Yes	No	Yes	No	Yes	No		
Fall enrollments									
Fall 01	1,327	679	648	828	499	675	652	22	1,306
Fall 02	1,483	682	801	930	553	877	606	25	1,458
Fall 03	1,434	806	628	1,016	418	946	488	25	1,409
Fall 04	1,516	968	548	1,097	419	1,166	350	45	1,471
Fall 05	1,568	906	662	853	715	1,156	412	31	1,537
Fall 06	1,590	422	1,168	1,233	357	888	702	37	1,553
Fall to Spring persistence rates									
Fall01/S02	71%	82%	61%	80%	58%	83%	59%	95%	71%
Fall02/S03	73%	85%	64%	82%	60%	83%	60%	76%	73%
Fall03/S04	76%	85%	65%	82%	62%	83%	64%	88%	76%
Fall04/S05	77%	84%	63%	84%	58%	82%	59%	91%	76%
Fall05/S06	77%	85%	66%	82%	71%	82%	61%	84%	77%
Fall06/S07	78%	86%	75%	82%	62%	83%	71%	84%	78%

NOTE: Does not include some matriculation services given to DSPS and CalWorks students separately.



Chabot and Las Positas Colleges AA/AS Degrees and Occupational Certificates 1994-2007

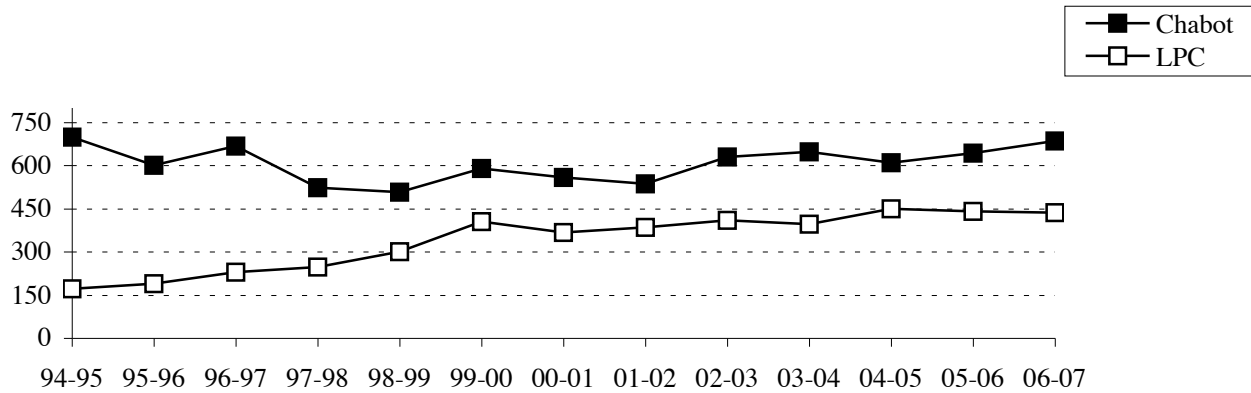
The table and graphs below display the number of degrees and certificates awarded at Chabot and Las Positas during the last thirteen years. In 2006-2007, Chabot awarded more degrees and certificates than in the previous year, while Las Positas awarded fewer degrees and more certificates.

	94-95	95-96	96-97	97-98	98-99	99-00	00-01	01-02	02-03	03-04	04-05	05-06	06-07
Chabot													
Degrees	697	601	666	523	506	590	558	535	628	646	610	642	685
Certificates	171	137	155	159	138	175	188	180	285	301	258	252	306
Las Positas													
Degrees	159	190	229	246	299	405	366	385	409	395	449	441	435
Certificates	38	41	62	71	110	124	81	101	119	87	115	102	115

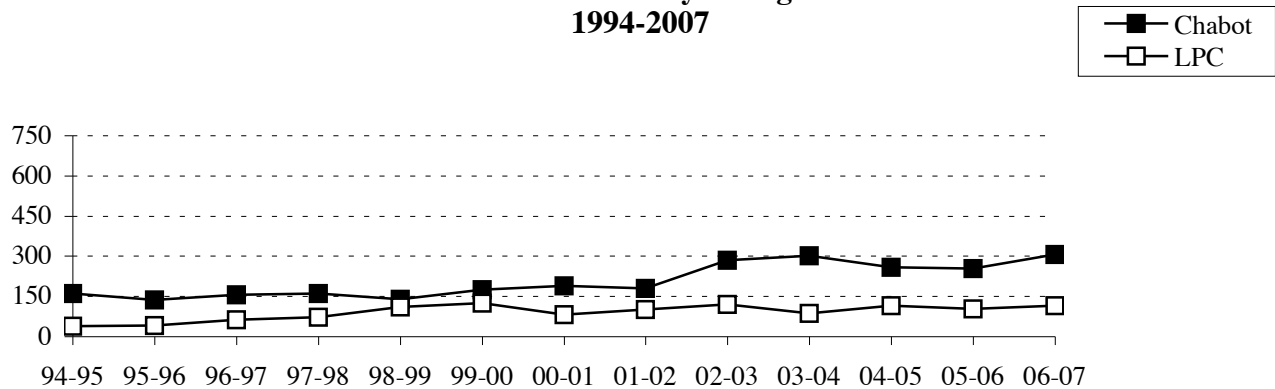
SOURCES: CLPCCD MIS/ITS degree/certificate reports for District, Chabot College, and Las Positas College.

NOTE: Includes degrees and certificates in the year awarded, regardless of the year earned.

**Chabot and Las Positas Colleges
Number of AA/AS Degrees by College and Year
1994-2007**



**Chabot and Las Positas Colleges
Number of Certificates by College and Year
1994-2007**



Chabot and Las Positas Colleges

Transfer rates and number of transfers: by college and statewide

Transfer numbers and transfer rates measure the number and percentage of community college students who transfer to four-year colleges. Although our students transfer to many four-year colleges, the majority transfers to CSU and UC. Transfer rates include transfers to colleges nationwide, while transfer numbers are available only for CSU and UC. Chabot and Las Positas Colleges had transfer rates at or above their expected rates. Regarding the number of transfers, Chabot College experienced a decrease in transfers to CSU and UC in 2006-2007. Las Positas College saw an increase in transfers to both CSU and UC in the same year. Below are transfer rates and numbers for Chabot and Las Positas Colleges and for all California Community Colleges. The following page contains graphs displaying the trends in the numbers of transfers to CSU and UC.

Transfer Rates to Four-year Universities: 1993-2001

Transfer rates express the percentage of community college students who transfer to four-year colleges. The transfer rate depends upon how the group of potential transfer students is defined—should all students at the community college be considered potential transfer students, even if they do not intend to transfer, or should we consider only those who declare or act like they intend to transfer, such as those who take more than one course?

The state Chancellor's Office defines potential transfer students as those who enrolled in a California Community College (CCC) as a first-time student in a fall term and, who, within a period of six years: 1) attempted transfer-level math or English (regardless of the outcome) and 2) completed at least 12 units in the CCC system. To determine college and statewide transfer rates, the Chancellor's Office then looks for these students in four-year universities nationwide.

The Chancellor's Office cautions against comparing transfer rates between colleges due to five factors that are beyond the control of the colleges. The following five factors may positively or negatively affect transfer rate—academic preparedness index, percentage of students over the age of 25, county per-capita income, county unemployment rate, and miles to the nearest CSU. Expected transfer rates have been calculated for each college using these five variables. Therefore, a college's transfer rate should be compared with its own expected rate, rather than with the transfer rate of other colleges. Both Chabot and Las Positas had transfer rates at or above their expected rates.

Transfer Rates to a Four-year University for Chabot College, Las Positas College, and all California Community Colleges (CCC's): 1993-2001

Cohorts	Transfer Rate					
	Chabot College		Las Positas College		All CCC's	
	Actual	Expected	Actual	Expected	Actual	Expected
1993-1999 Cohort	34.6%	33.8%	40.7%	38.6%	32.0%	–
1994-2000 Cohort	33.7%	34.8%	40.4%	39.2%	33.7%	–
1995-2001 Cohort	37.8%	32.2%	41.4%	40.2%	34.2%	–

SOURCE: Chancellor's Office, *Transfer Capacity and Readiness in the California Community Colleges, March 2002*

NOTE: The Chancellor's Office has calculated actual and expected transfer rates for only the above three cohorts.

Number of transfers to CSU/UC from Chabot College, Las Positas College, and all California Community Colleges (CCC's): Full academic years 1999-2007

Academic Year	Combined Fall and Spring transfers					
	Chabot		Las Positas		All CCC's	
	CSU	UC	CSU	UC	CSU	UC
1999-2000	654	120	231	66	47,706	10,827
2000-2001	628	127	213	56	47,900	11,215
2001-2002	613	132	278	76	50,743	12,291
2002-2003	660	120	291	80	50,746	12,780
2003-2004	564	140	281	83	48,321	12,580
2004-2005	636	149	331	90	53,565	13,211
2005-2006	580	153	385	100	52,640	13,508
2006-2007	556	135	408	107	54,379	13,923

SOURCE: California Postsecondary Education Commission.

Chabot and Las Positas Colleges

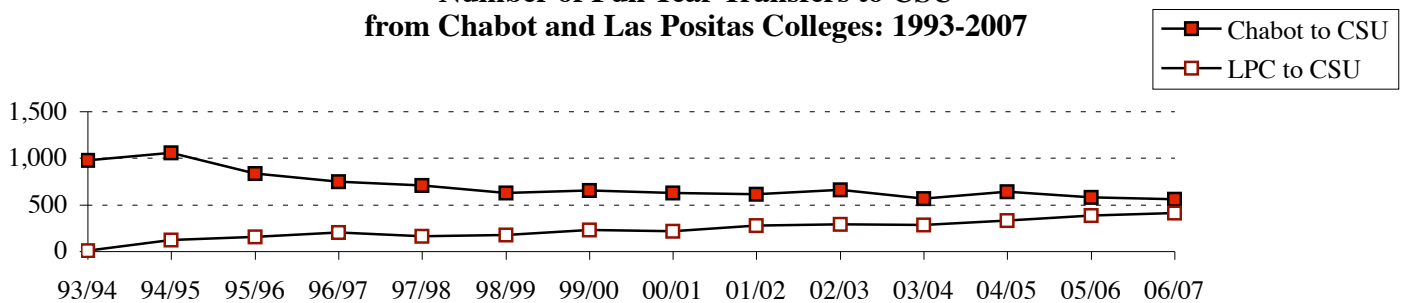
Transfer trends to CSU and UC: by college and statewide: 1993-2007

Many students rushed to transfer before Chabot transitioned from a quarter system to a semester system in Fall 1994. The number of transfers from Chabot to CSU rose to a high of 1,058 in 1994-95 and steadily declined until 1998-99. Since 1998-99, Chabot transfers to CSU have fluctuated, with transfers to CSU decreasing in 2005-06 and 2006-07. The number of Chabot transfers to UC increased to a high of 161 in 1994-95. Since 1995-96, Chabot transfers to UC have fluctuated, with three of the last four years experiencing a steady increase of Chabot transfers to UC.

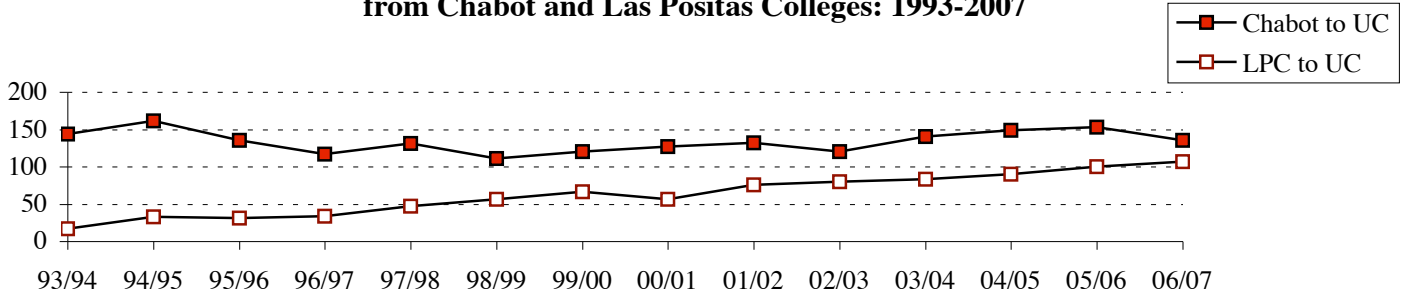
Las Positas has experienced an increase of transfers to both CSU and UC since it began tracking transfers. In 1993-94, Las Positas had nine transfers to CSU and 17 transfers to UC. In 2006-07, the numbers of transfers from Las Positas to CSU climbed to 408, and the number of transfers to UC rose to 107.

The number of transfers from all community colleges to CSU has fluctuated from 1993-94 to 2003-04 and increased in two of the last three years. Community college transfers to UC have declined from 1993-94 to 1998-99 and increased between 1999-00 & 2006-07.

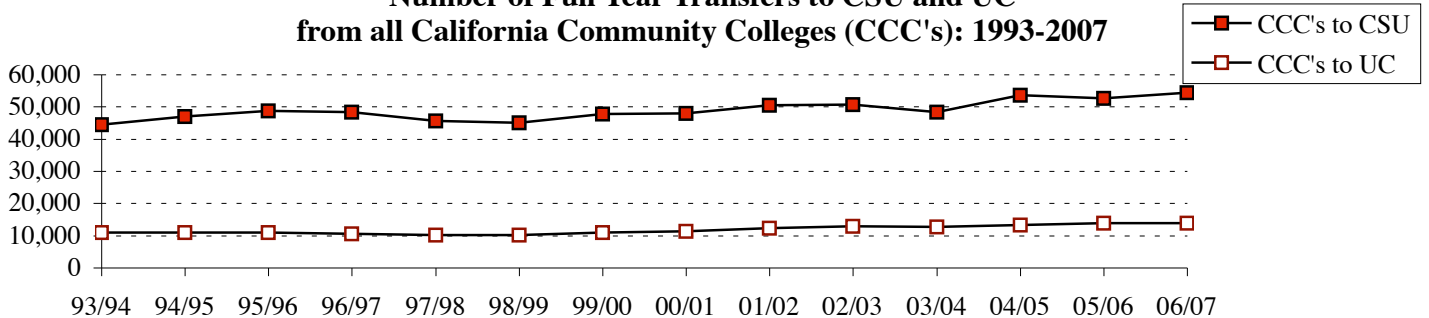
**Number of Full Year Transfers to CSU
from Chabot and Las Positas Colleges: 1993-2007**



**Number of Full Year Transfers to UC
from Chabot and Las Positas Colleges: 1993-2007**



**Number of Full Year Transfers to CSU and UC
from all California Community Colleges (CCC's): 1993-2007**

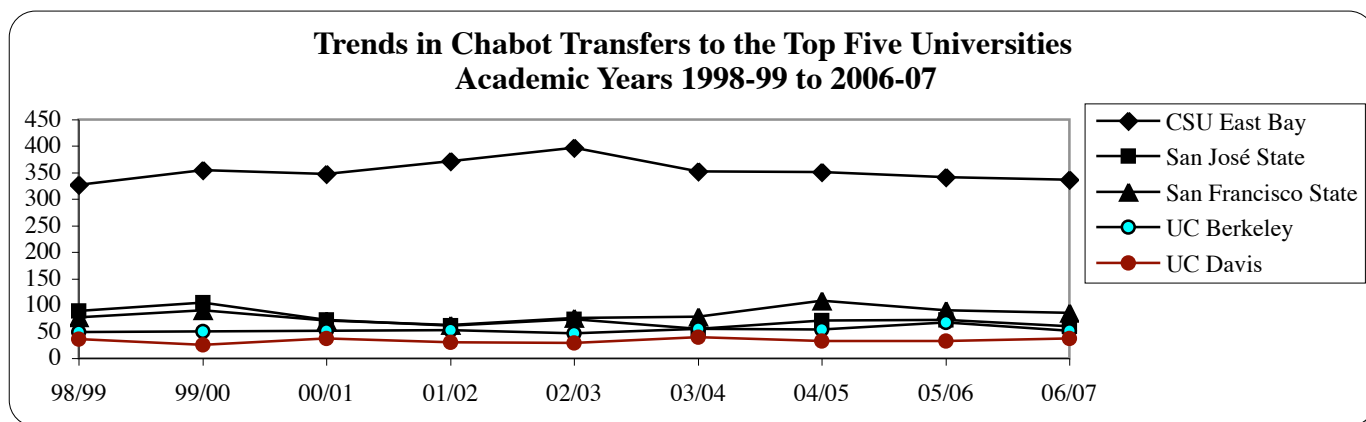


Top Public Universities of Chabot Transfers: Academic Years 1998-99 to 2006-07

The table and chart below display the top public universities Chabot students have transferred to during the last nine academic years. The top five public universities of Chabot transfers, in order from the highest to the lowest, have been CSU East Bay, San Francisco State, San José State, UC Berkeley, and UC Davis. The number of transfers to these universities has been fluctuating over the years. Most recently, UC Davis has experienced an increase in the number of Chabot transfers compared to the previous year. The number of Chabot transfers to CSU East Bay, San Francisco State, San José State, and UC Berkeley decreased slightly in 2006-2007.

	98/99	99/00	00/01	01/02	02/03	03/04	04/05	05/06	06/07	Total
CSU East Bay (formerly Hayward)	327	355	347	371	397	352	351	341	337	3,178
San Francisco State University	77	90	71	63	76	79	109	91	86	742
San José State University	89	105	72	61	74	55	71	72	60	659
UC Berkeley	49	51	52	53	47	55	54	68	52	481
UC Davis	36	25	37	30	29	40	33	33	37	300
CSU Chico	42	30	45	28	23	14	25	6	7	220
San Diego State University	23	19	27	20	20	13	15	6	6	149
UCLA	8	17	14	21	10	19	24	10	13	136
CSU Sacramento	14	10	18	12	16	17	12	11	20	130
UC Santa Cruz	9	3	7	2	14	12	18	11	9	85
CSU Stanislaus	5	7	12	9	6	5	13	4	7	68
UC San Diego	3	8	8	15	5	3	7	7	9	65
UC Santa Barbara	6	12	7	4	6	5	5	8	6	59
CA Polytechnic, San Luis Obispo	8	6	4	7	8	5	1	10	5	54
CSU Long Beach	3	6	4	8	6	6	3	6	2	44
CSU Fresno	7	3	4	8	4	3	6	5	4	44
Sonoma State University	6	6	6	6	6	1	6	3	0	40
Humboldt State University	2	6	3	3	6	1	6	6	3	36
UC Irvine	0	0	1	7	3	1	6	9	7	34
CSU Northridge	6	1	3	5	3	2	4	5	3	32
UC Riverside	0	4	1	0	6	5	2	6	2	26
CSU Los Angeles	1	0	2	2	3	2	5	3	4	22
CSU Monterey Bay	5	2	2	2	3	4	0	1	1	20
CSU Fullerton	1	4	0	2	3	0	4	1	1	16
CSU San Marcos	2	3	1	2	2	1	0	1	3	15
CA Polytechnic, Pomona	3	1	2	0	1	2	2	2	1	14
CSU San Bernardino	0	0	1	3	2	0	2	3	1	12
CSU Bakersfield	1	0	1	0	1	0	1	0	3	7
CSU Dominguez Hills	1	0	2	0	0	1	0	2	0	6
California Maritime Academy	0	0	0	0	0	0	0	1	2	3
UC Merced	0	0	0	0	0	0	0	1	0	1
CSU Channel Islands	0	0	0	0	0	1	0	0	0	1
Total	734	774	754	744	780	704	785	733	691	6,698

SOURCE: California Postsecondary Education Commission



Top Public Universities of Las Positas Transfers: Academic Years 1998-99 to 2006-07

The table and chart below display the top public universities that Las Positas students have transferred to during the last nine academic years. The top five public universities of Las Positas transfers have been CSU East Bay, UC Davis, San José State, CSU Sacramento, and San Francisco State. The number of transfers to these universities has been fluctuating over the years. In 2006-2007, CSU East Bay, UC Davis, CSU Sacramento, and San Francisco State experienced an increase in the number of Las Positas transfers, while fewer Las Positas students transferred to San José State.

	98/99	99/00	00/01	01/02	02/03	03/04	04/05	05/06	06/07	Total
CSU East Bay (formerly Hayward)	104	134	100	151	145	148	163	165	179	1,289
UC Davis	23	19	29	23	38	37	43	39	40	291
San José State University	20	24	16	25	30	30	38	52	42	277
CSU Sacramento	22	24	36	27	30	31	28	25	28	251
San Francisco State University	1	7	15	23	37	35	33	39	51	241
UC Berkeley	10	20	11	26	17	14	16	24	25	163
CA Polytechnic, San Luis Obispo	8	13	10	10	9	7	13	11	8	89
UC Santa Barbara	11	19	3	4	5	9	4	10	8	73
CSU Stanislaus	2	7	11	9	8	9	7	10	11	74
Sonoma State University	10	9	2	7	4	4	7	14	8	65
UC Santa Cruz	3	2	5	7	7	5	13	11	10	63
UCLA	5	4	6	6	3	10	4	9	10	57
CSU Chico	0	0	0	0	0	0	0	28	28	56
San Diego State University	0	0	3	4	1	0	1	13	28	50
Humboldt State University	4	6	9	4	4	4	4	6	2	43
CSU Long Beach	0	4	3	5	6	4	8	4	7	41
UC San Diego	4	0	1	8	5	2	5	5	7	37
CSU Monterey Bay	0	1	4	6	10	2	6	2	3	34
CSU Fresno	1	1	0	4	4	3	6	3	2	24
CSU Fullerton	1	1	1	2	3	2	6	2	4	22
UC Irvine	0	1	1	2	4	5	3	1	3	20
CA Polytechnic, Pomona	0	0	0	0	0	1	1	7	1	10
CSU Northridge	0	0	0	0	0	0	4	2	4	10
CSU Bakersfield	1	0	2	1	0	0	3	0	0	7
UC, Riverside	0	1	0	0	1	1	2	0	2	7
CSU Los Angeles	0	0	1	0	0	0	1	0	1	3
CSU Channel Islands	0	0	0	0	0	0	1	1	1	3
UC Merced	0	0	0	0	0	0	0	1	2	3
CSU San Bernardino	2	0	0	0	0	0	0	0	0	2
CSU Dominguez Hills	0	0	0	0	0	1	0	1	0	2
CA Maritime Academy	0	0	0	0	0	0	1	0	0	1
Total	232	297	269	354	371	364	421	485	515	3,308

SOURCE: California Postsecondary Education Commission

